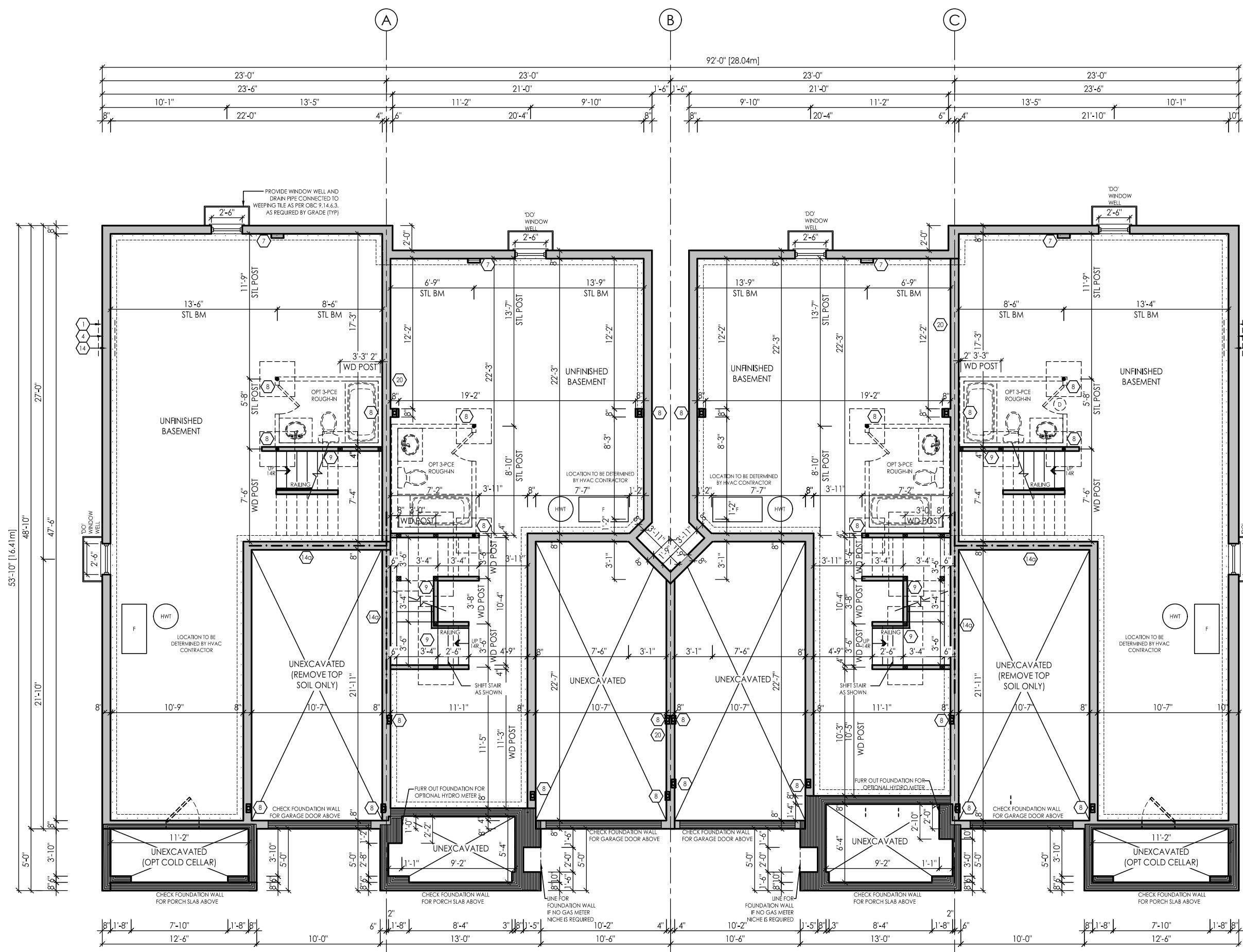
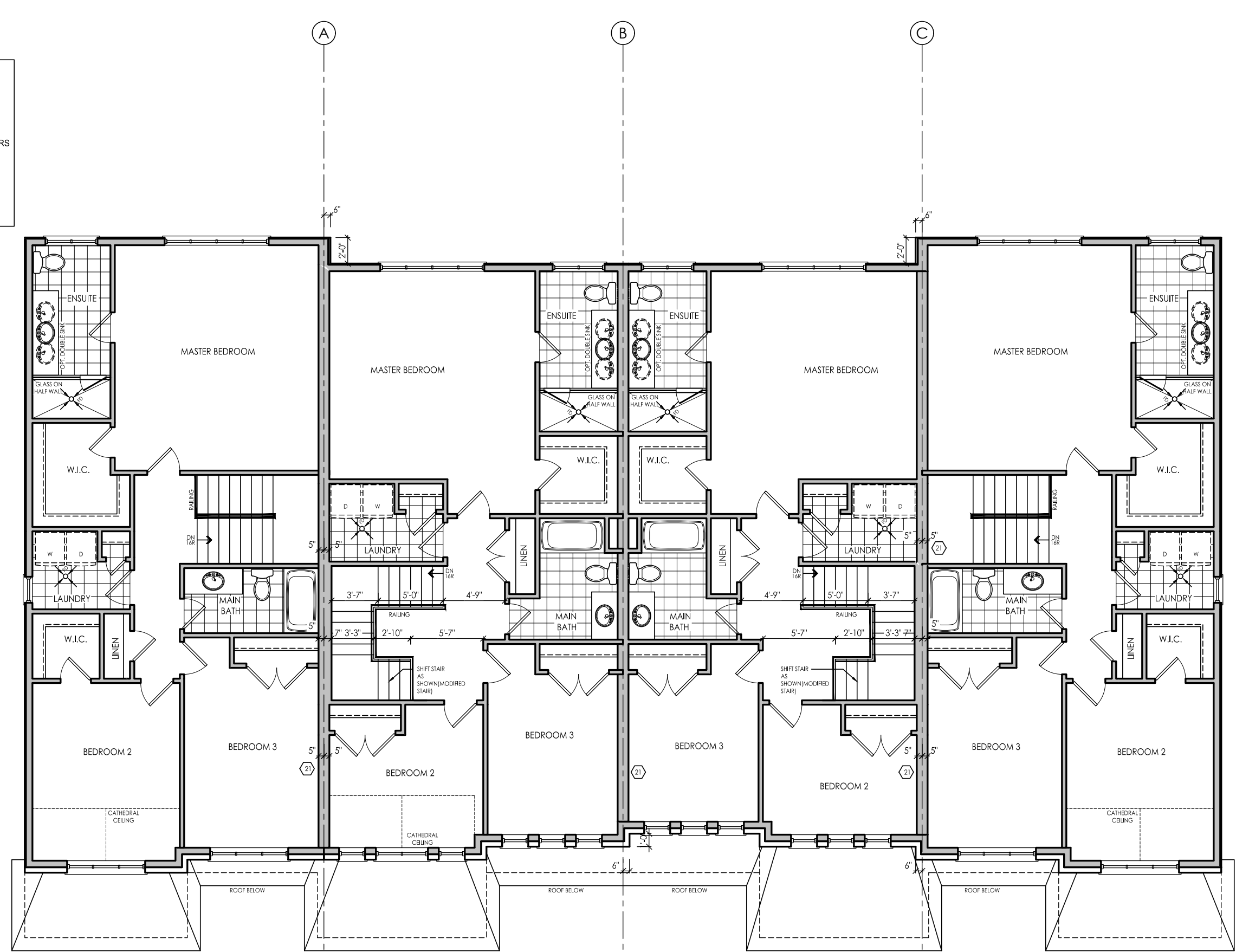


I, DANIEL HANNINEN, DECLARE THAT I HAVE REVIEWED AND TAKEN DESIGN RESPONSIBILITY FOR THE DESIGN WORK ON BEHALF OF RN DESIGN INC. UNDER DIVISION 2, PART 3, SUBSECTION 3.2 OF THE BUILDING CODE. I AM QUALIFIED AND THE FIRM IS REGISTERED IN THE APPROPRIATE CLASS / CATEGORIES.
 QUALIFIED DESIGNER BORN: 2088
 FIRM BORN: 2095
 DATE: JANUARY-13-23

SIGNATURE: _____

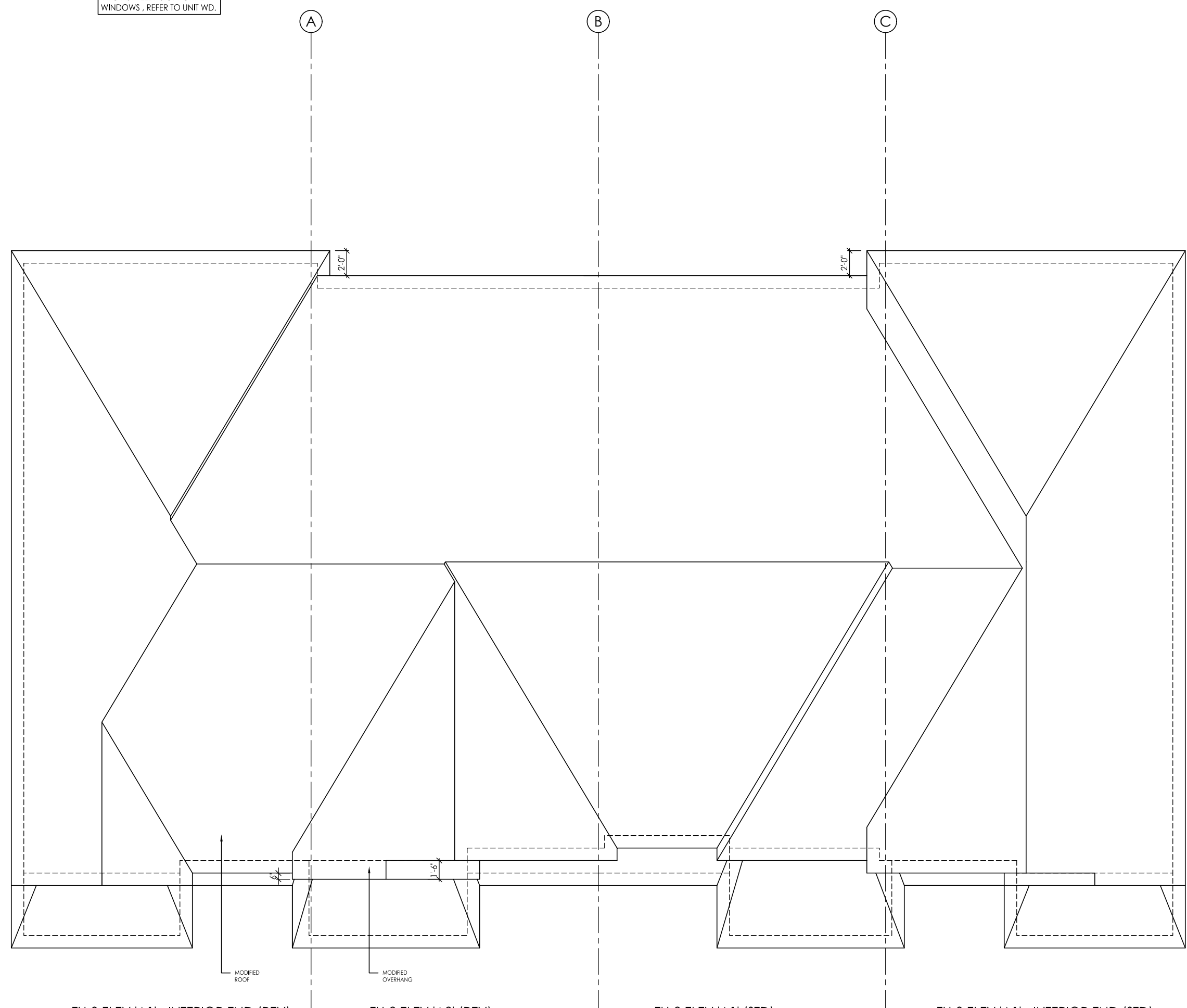


TH-3 ELEV 'A1' - INTERIOR END (REV) TH-2 ELEV 'A2' (REV) TH-2 ELEV 'A1' (STD) TH-3 ELEV 'A1' - INTERIOR END (STD)
BASEMENT FLOOR - BLOCK 11

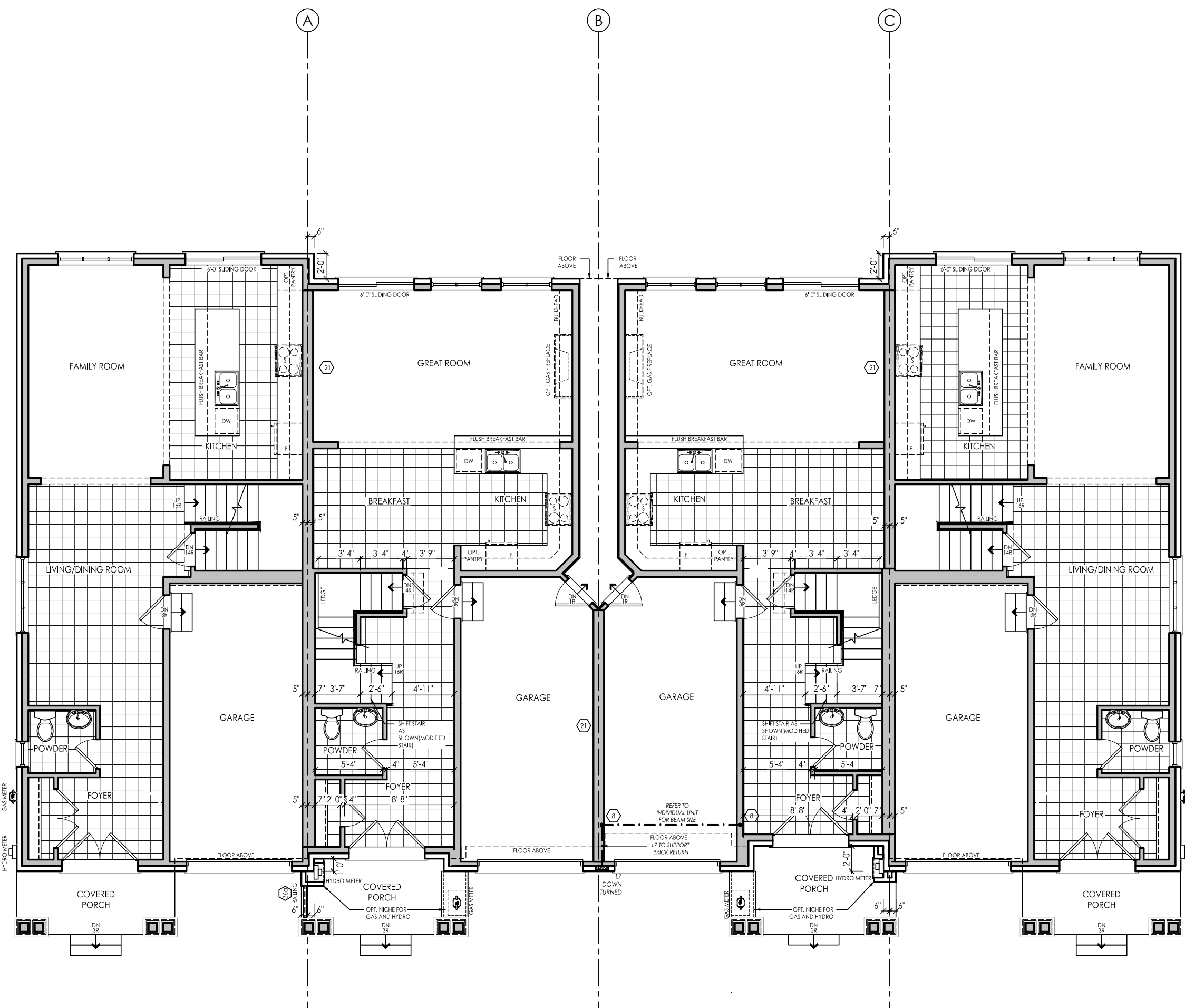


TH-3 ELEV 'A1' - INTERIOR END (REV) TH-2 ELEV 'A2' (REV) TH-2 ELEV 'A1' (STD) TH-3 ELEV 'A1' - INTERIOR END (STD)
SECOND FLOOR - BLOCK 11

FOR ANY OPTIONAL PLANS OR INFO AS WELL AS OPTIONAL WINDOWS, REFER TO UNIT WD.

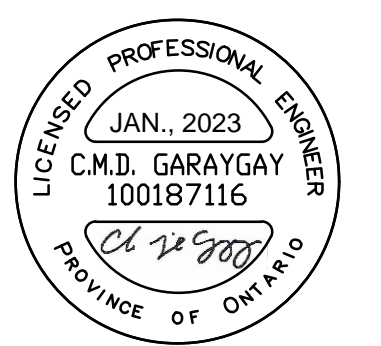


TH-3 ELEV 'A1' - INTERIOR END (REV) TH-2 ELEV 'A2' (REV) TH-2 ELEV 'A1' (STD) TH-3 ELEV 'A1' - INTERIOR END (STD)
ROOF PLAN - BLOCK 11



TH-3 ELEV 'A1' - INTERIOR END (REV) TH-2 ELEV 'A2' (REV) TH-2 ELEV 'A1' (STD) TH-3 ELEV 'A1' - INTERIOR END (STD)
GROUND FLOOR - BLOCK 11

ISSUING FIRM: 401.88.99 / 056.03.MP
 FOR ANY OPTIONAL PLANS OR INFO AS WELL AS OPTIONAL WINDOWS, REFER TO UNIT WD.

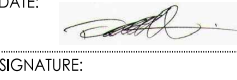


FOR STRUCTURAL ITEMS ONLY

#	revisions	date	chm	chk
1	ISSUED FOR CLIENT REVIEW	31.09.22	BN	AD
2	REVISED PER CLIENT COMMENTS	14.02.23	MD	AD
3	REV PER ENG COMMENTS	25.08.23	MD	AD
4	REVISED PER ADDITIONAL ENG COMMENTS	12.09.23	MD	AD
5	ISSUED FOR PERMIT	15.09.23	KS	AD

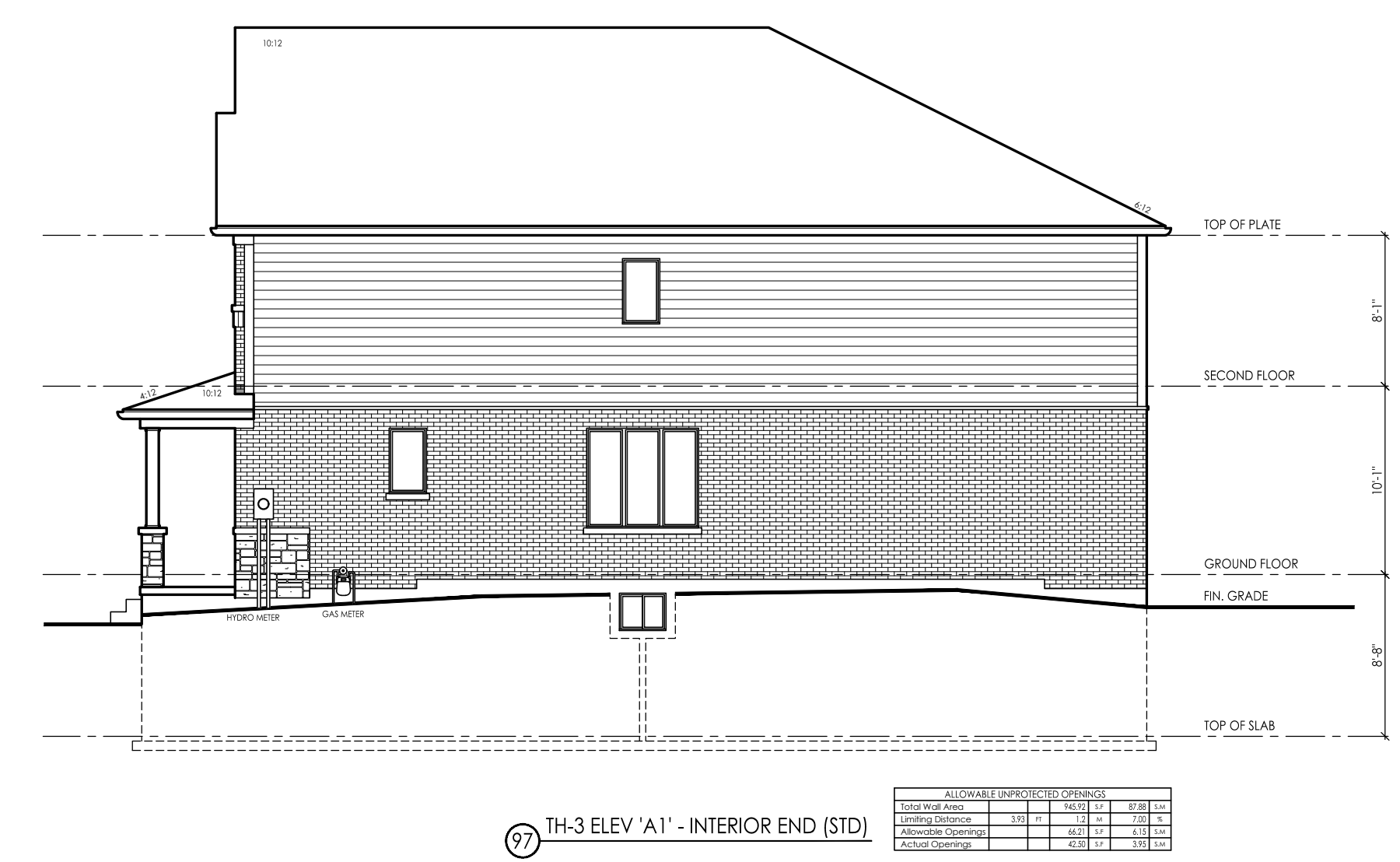
client: Tice River Homes
 project: Legacy
 model: BLOCK 11
 project #: 17052
 scale: 1/8" = 1'-0"
 page:

I, DANIEL MANNINEN DECLARE THAT I HAVE REVIEWED AND TAKEN DESIGN RESPONSIBILITY FOR THE DESIGN WORK ON BEHALF OF RN DESIGN DESIGNER DIVISION CLASS 3 SUBSECTION 3.2.2 OF THE BUILDING CODE. I AM QUALIFIED AND THE FIRM IS REGISTERED IN THE APPROPRIATE CLASS / CATEGORIES.
 QUALIFIED DESIGNER BCIN: 20888
 FIRM BCIN: 24995
 DATE: JANUARY-13-23

SIGNATURE: 



REVISIONS	
#	DESCRIPTION



REVISIONS	
#	DESCRIPTION



#	revisions	date	chm	chk
1	ISSUED FOR CLIENT REVIEW	31-Jan-22	RV	AD
2	REVISED PER CLIENT COMMENTS	1-Feb-22	MD	AD
3	REV PER ENG COMMENTS	22-Mar-22	MD	AD
5	ISSUED FOR PERMIT	13-Jan-23	KS	AD

client: Tice River Homes
 project: Legacy
 model: BLOCK 11
 project #: 17052
 scale: 1/8" = 1'-0"