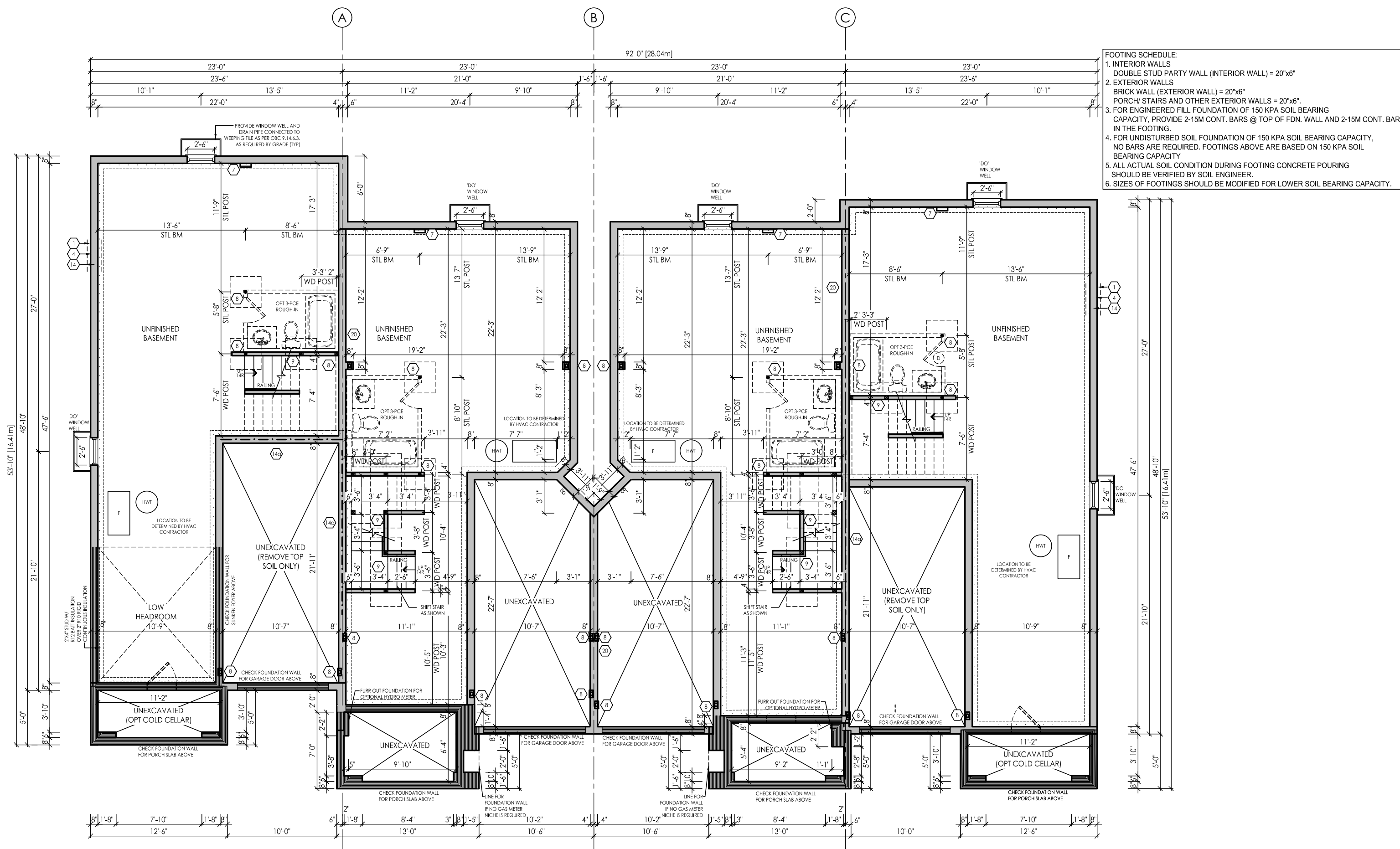


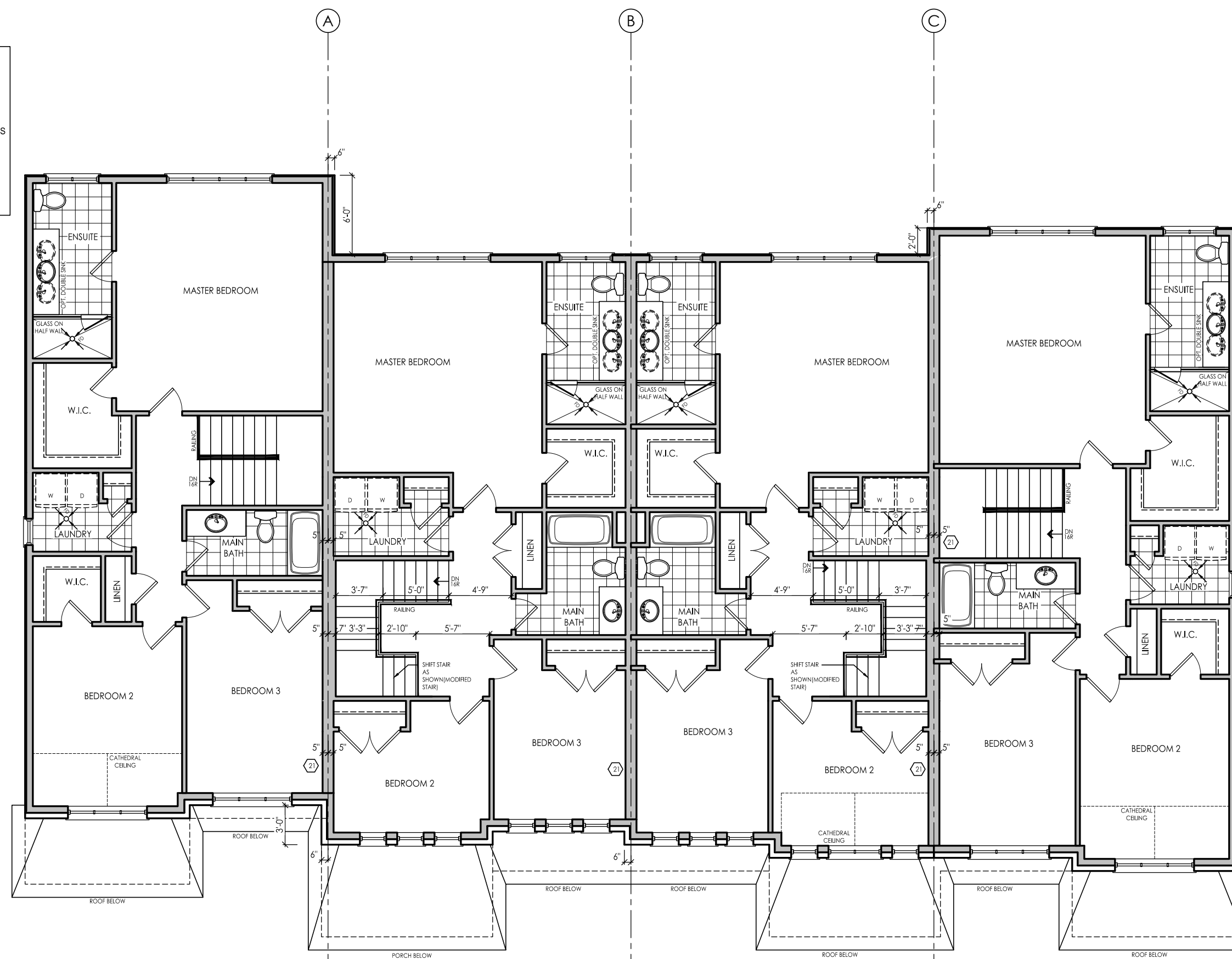




I, DANIEL HANNINEN, DECLARE THAT I HAVE REVIEWED AND TAKEN DESIGN RESPONSIBILITY FOR THE DESIGN WORK ON BEHALF OF RN DESIGN INC. UNDER DIVISION 2, PART 3, SUBSECTION 3.2.2 OF THE BUILDING CODE. I AM QUALIFIED AND THE FIRM IS REGISTERED IN THE APPROPRIATE CLASSIFICATION CATEGORIES.  
 QUANTITY DESIGNER BORN: 2088  
 FIRM BORN: 2095  
 DATE: JANUARY-13-23  
 SIGNATURE: \_\_\_\_\_

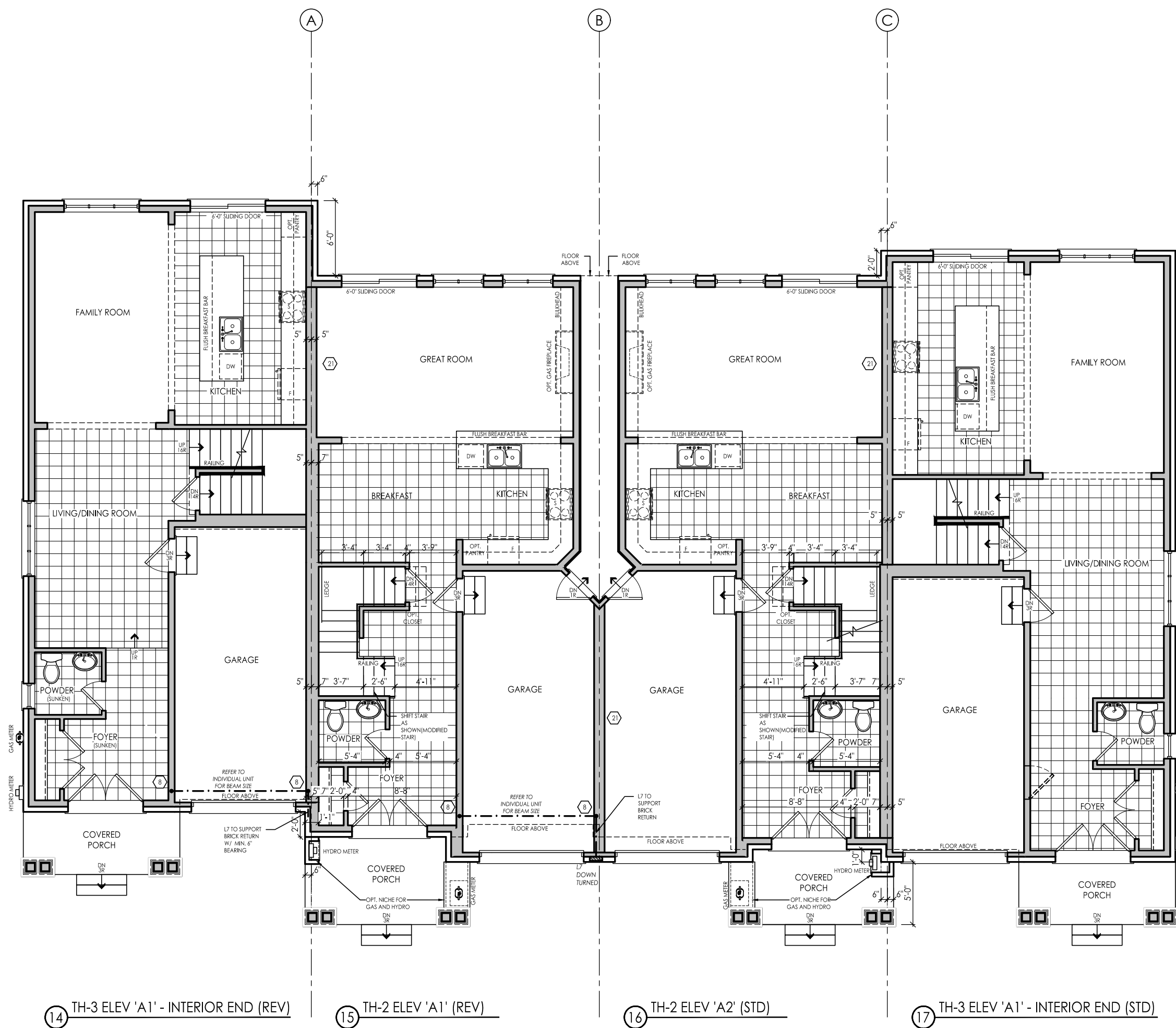


14 TH-3 ELEV 'A1' - INTERIOR END (REV) 15 TH-2 ELEV 'A1' (REV) 16 TH-2 ELEV 'A2' (STD) 17 TH-3 ELEV 'A1' - INTERIOR END (STD)  
**BASEMENT FLOOR - BLOCK 3**



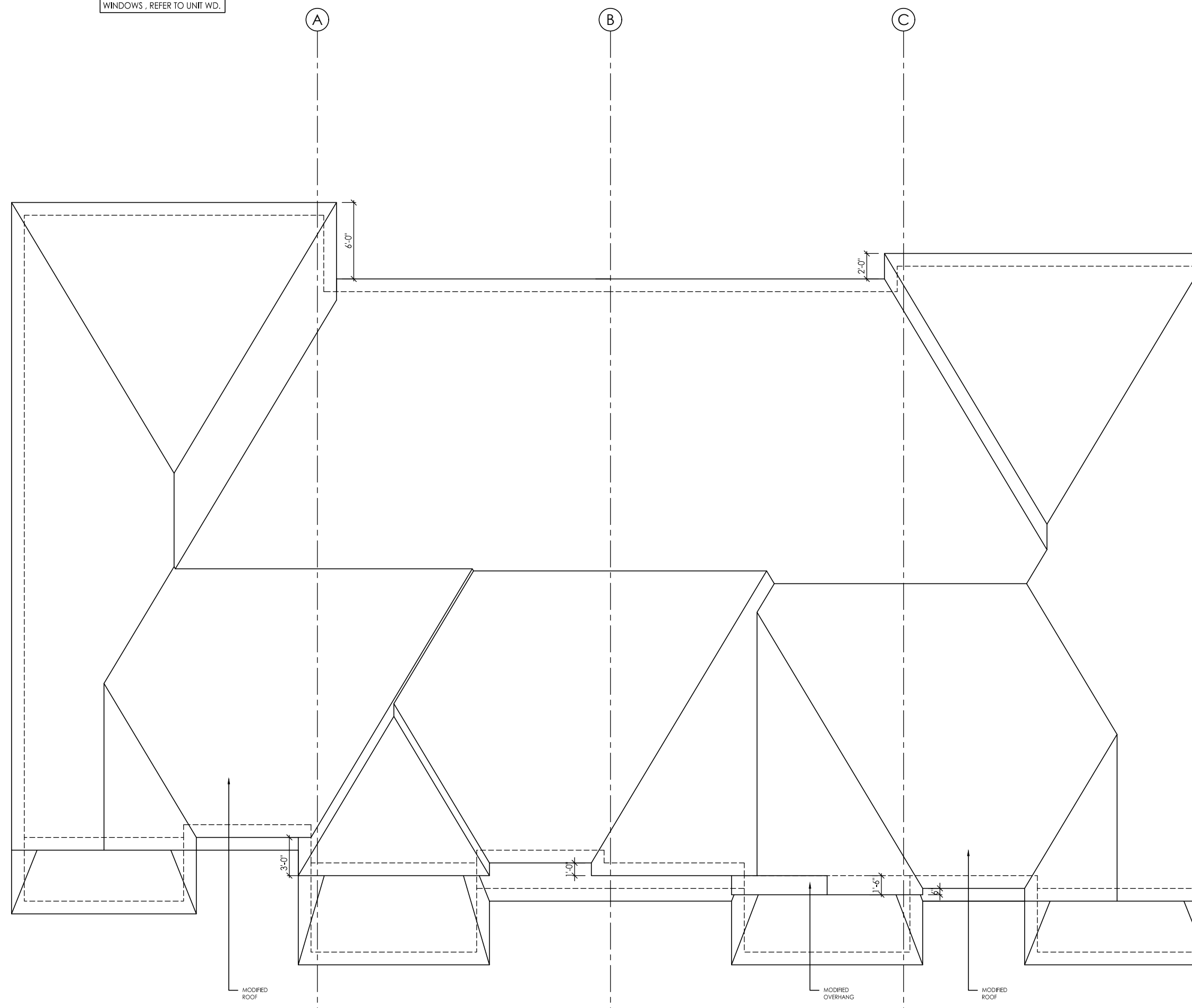
14 TH-3 ELEV 'A1' - INTERIOR END (REV) 15 TH-2 ELEV 'A1' (REV) 16 TH-2 ELEV 'A2' (STD) 17 TH-3 ELEV 'A1' - INTERIOR END (STD)  
**SECOND FLOOR - BLOCK 3**

FOR ANY OPTIONAL PLANS OR INFO AS WELL AS OPTIONAL WINDOWS, REFER TO UNIT WD.



14 TH-3 ELEV 'A1' - INTERIOR END (REV) 15 TH-2 ELEV 'A1' (REV) 16 TH-2 ELEV 'A2' (STD) 17 TH-3 ELEV 'A1' - INTERIOR END (STD)  
**GROUND FLOOR - BLOCK 3**

FOR ANY OPTIONAL PLANS OR INFO AS WELL AS OPTIONAL WINDOWS, REFER TO UNIT WD.



14 TH-3 ELEV 'A1' - INTERIOR END (REV) 15 TH-2 ELEV 'A1' (REV) 16 TH-2 ELEV 'A2' (STD) 17 TH-3 ELEV 'A1' - INTERIOR END (STD)  
**ROOF PLAN - BLOCK 3**

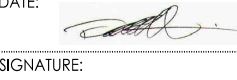


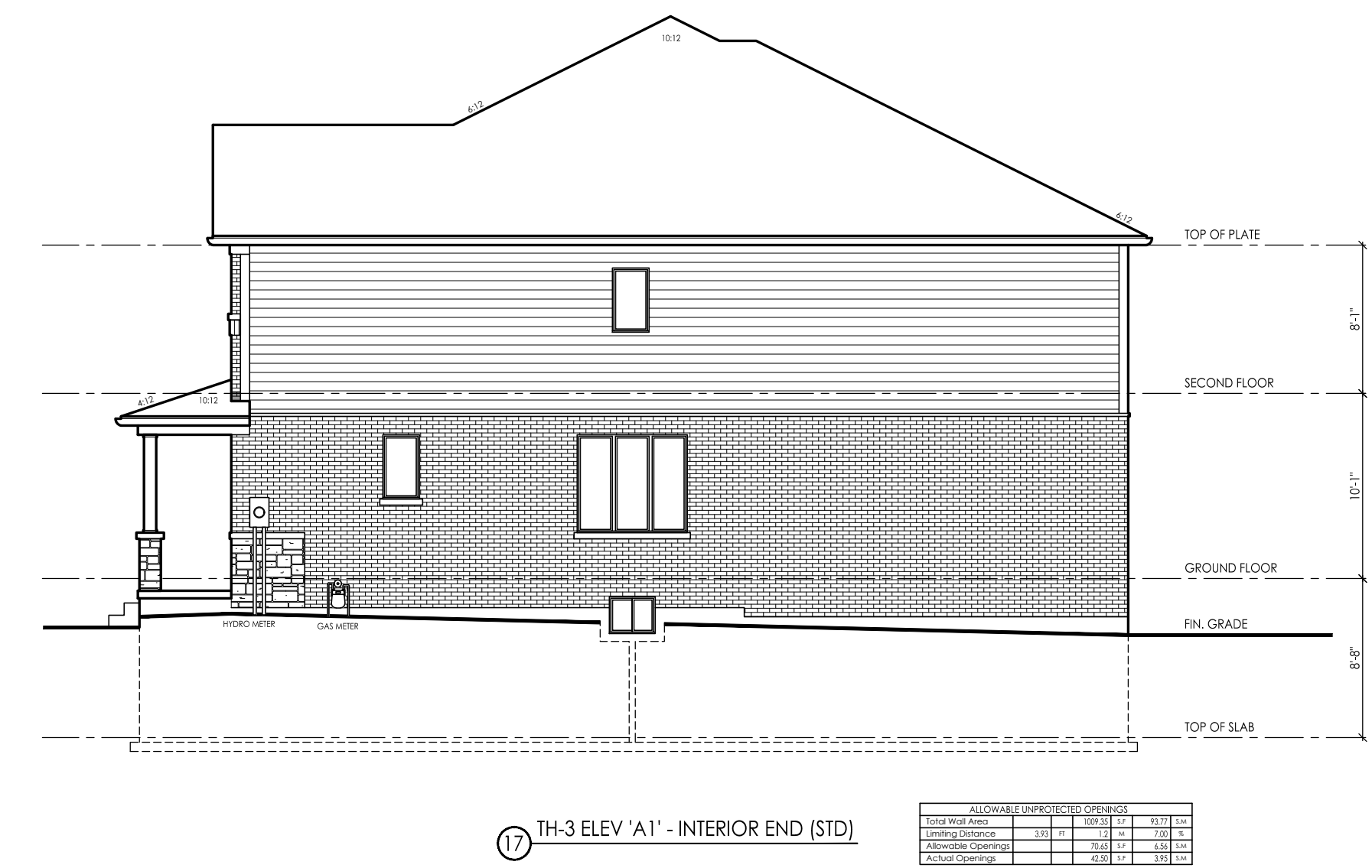
FOR STRUCTURAL ITEMS ONLY

#	revisions	date	chm	chk
1	ISSUED FOR CLIENT REVIEW	31/01/23	BN	AD
2	REVISED PER CLIENT COMMENTS	14/02/23	MD	AD
3	REV PER ENG COMMENTS	25/02/23	MD	AD
4	REVISED PER ADDITIONAL ENG COMMENTS	02/03/23	MD	AD
5	ISSUED FOR PERMIT	15/04/23	KS	AD

client: Tice River Homes  
 project: Legacy  
 model: Ayr  
 BLOCK 3  
 project #: 17052  
 scale: 1/8" = 1'-0"  
 page:

I, DANIEL MANNINEN DECLARE THAT I HAVE REVIEWED AND TAKEN DESIGN RESPONSIBILITY FOR THE DESIGN WORK ON BEHALF OF RN DESIGN DESIGNER DIVISION, CLASS 3 SUBSECTION 3.2.4 OF THE BUILDING CODE. I AM QUALIFIED AND THE FIRM IS REGISTERED IN THE APPROPRIATE CLASS / CATEGORIES.  
 QUALIFIED DESIGNER BCIN: 20888  
 FIRM BCIN: 26995  
 DATE: JANUARY-13-23

SIGNATURE: 



#	revisions	date	chm	chk
1	ISSUED FOR CLIENT REVIEW	31-Jan-22	RV	AD
2	REVISED PER CLIENT COMMENTS	1-Feb-22	MD	AD
3	REV PER ENG COMMENTS	25-Mar-22	MD	AD
5	ISSUED FOR PERMIT	13-Jan-23	KS	AD

client: Tice River Homes  
 project: Legacy  
 model: BLOCK 3  
 project #: 17052  
 scale: 1/8" = 1'-0"