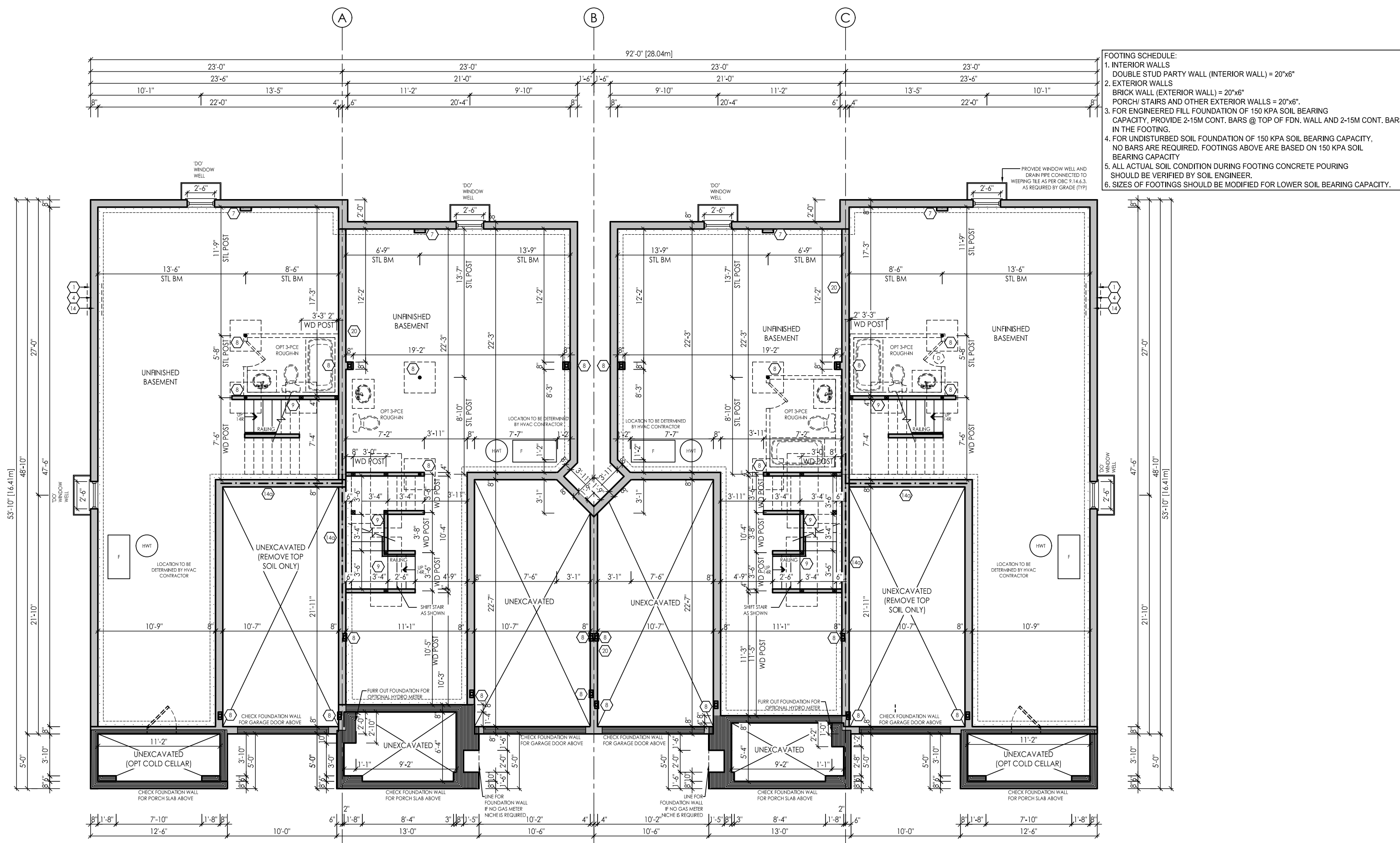
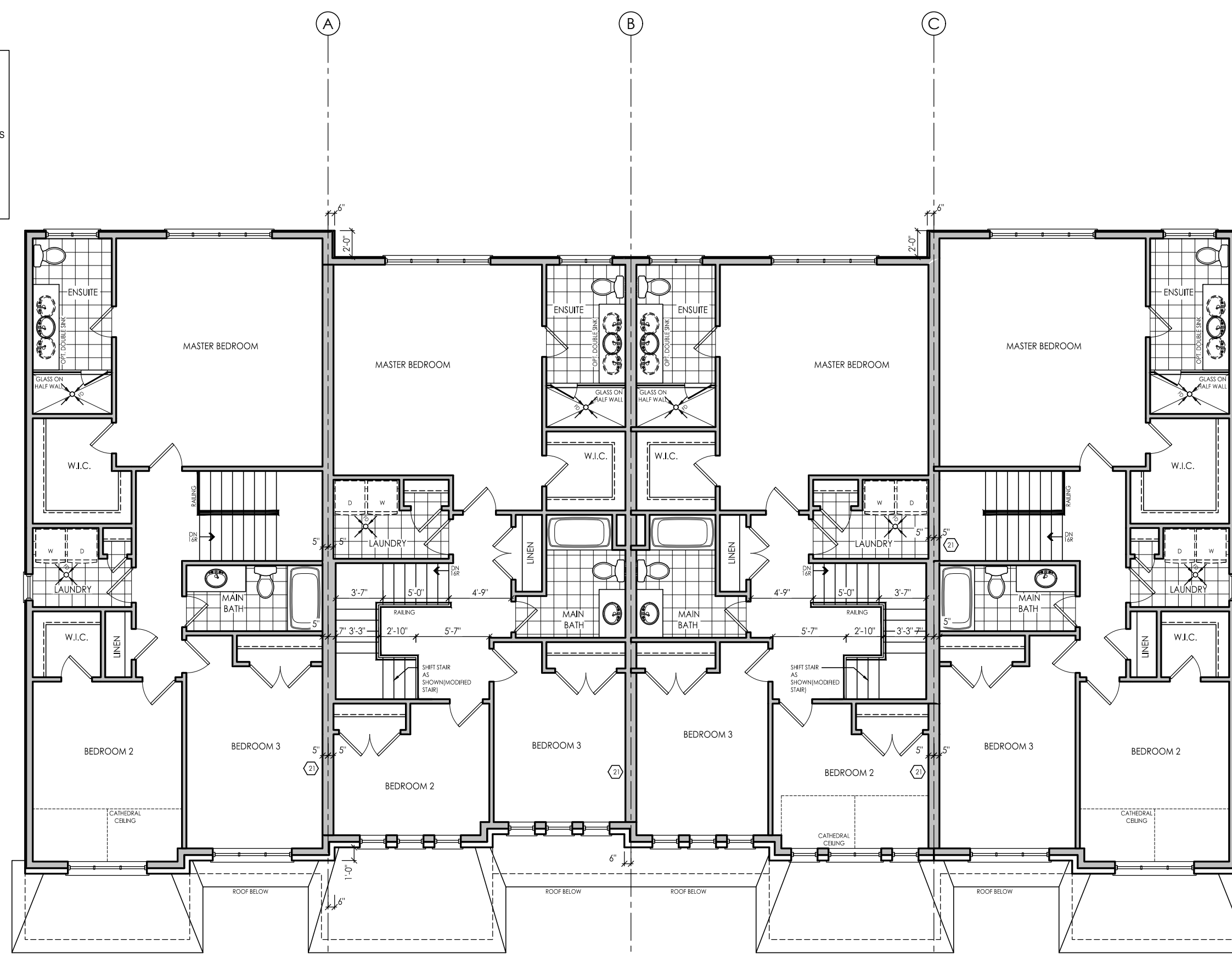


I, DANIEL HANNINEN, DECLARE THAT I HAVE REVIEWED AND TAKEN DESIGN RESPONSIBILITY FOR THE DESIGN WORK ON BEHALF OF RN DESIGN UNDER DIVISION 2, PART 3, SUBSECTION 3.2.2 OF THE BUILDING CODE. I AM QUALIFIED AND THE FIRM IS REGISTERED IN THE APPROPRIATE CLASS / CATEGORIES.
QUALIFIED DESIGNER BORN: 2088
FIRM BORN: 2095
DATE: JANUARY-13-23
SIGNATURE: _____

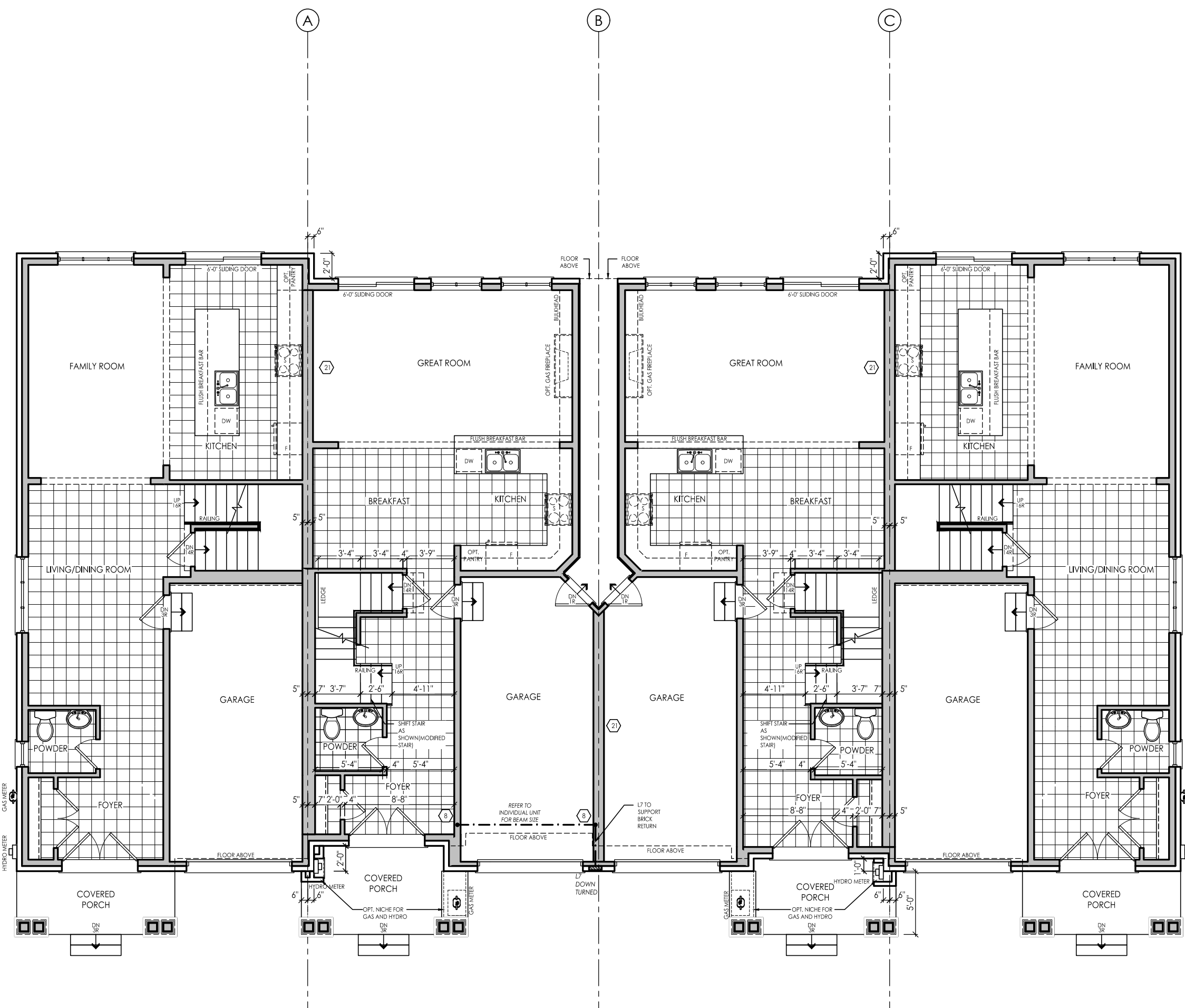


18 TH-3 ELEV 'A1' - INTERIOR END (REV) 19 TH-2 ELEV 'A1' (REV) 20 TH-2 ELEV 'A2' (STD) 21 TH-3 ELEV 'A1' - INTERIOR END (STD)
BASEMENT FLOOR - BLOCK 4



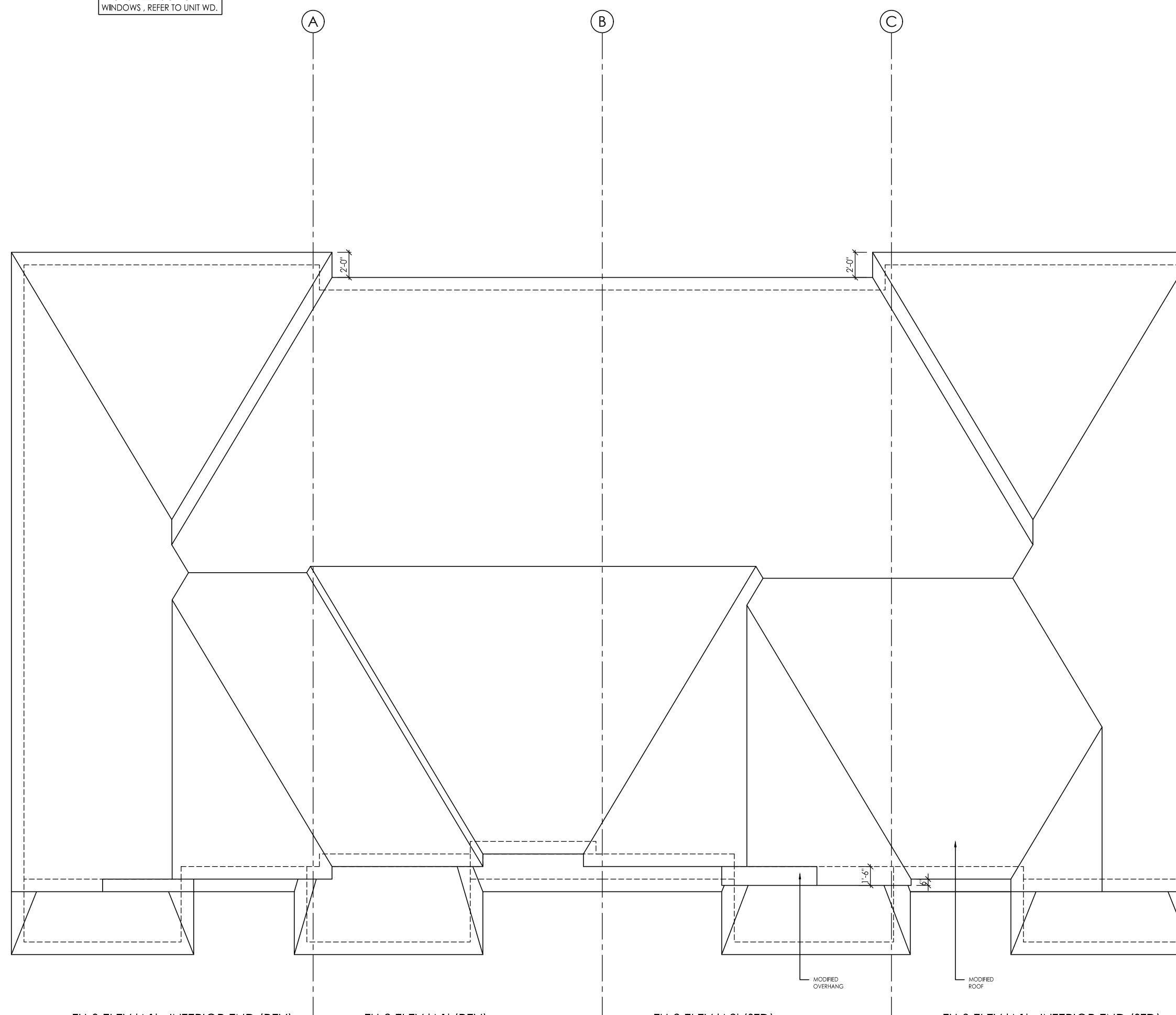
18 TH-3 ELEV 'A1' - INTERIOR END (REV) 19 TH-2 ELEV 'A1' (REV) 20 TH-2 ELEV 'A2' (STD) 21 TH-3 ELEV 'A1' - INTERIOR END (STD)
SECOND FLOOR - BLOCK 4

FOR ANY OPTIONAL PLANS OR INFO AS WELL AS OPTIONAL WINDOWS, REFER TO UNIT WD.



18 TH-3 ELEV 'A1' - INTERIOR END (REV) 19 TH-2 ELEV 'A1' (REV) 20 TH-2 ELEV 'A2' (STD) 21 TH-3 ELEV 'A1' - INTERIOR END (STD)
GROUND FLOOR - BLOCK 4

ISSUING FIRM: 4317-987 / 006.10 MP
FOR ANY OPTIONAL PLANS OR INFO AS WELL AS OPTIONAL WINDOWS, REFER TO UNIT WD.



18 TH-3 ELEV 'A1' - INTERIOR END (REV) 19 TH-2 ELEV 'A1' (REV) 20 TH-2 ELEV 'A2' (STD) 21 TH-3 ELEV 'A1' - INTERIOR END (STD)
ROOF PLAN - BLOCK 4

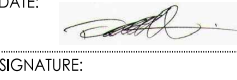


FOR STRUCTURAL ITEMS ONLY

#	revisions	date	chm	chk
1	ISSUED FOR CLIENT REVIEW	31-Jan-23	BN	AD
2	REVISED PER CLIENT COMMENTS	1-Feb-23	MD	AD
3	REV PER ENG COMMENTS	20-Feb-23	MD	AD
4	ISSUED FOR PERMIT	13-Jan-23	KS	AD

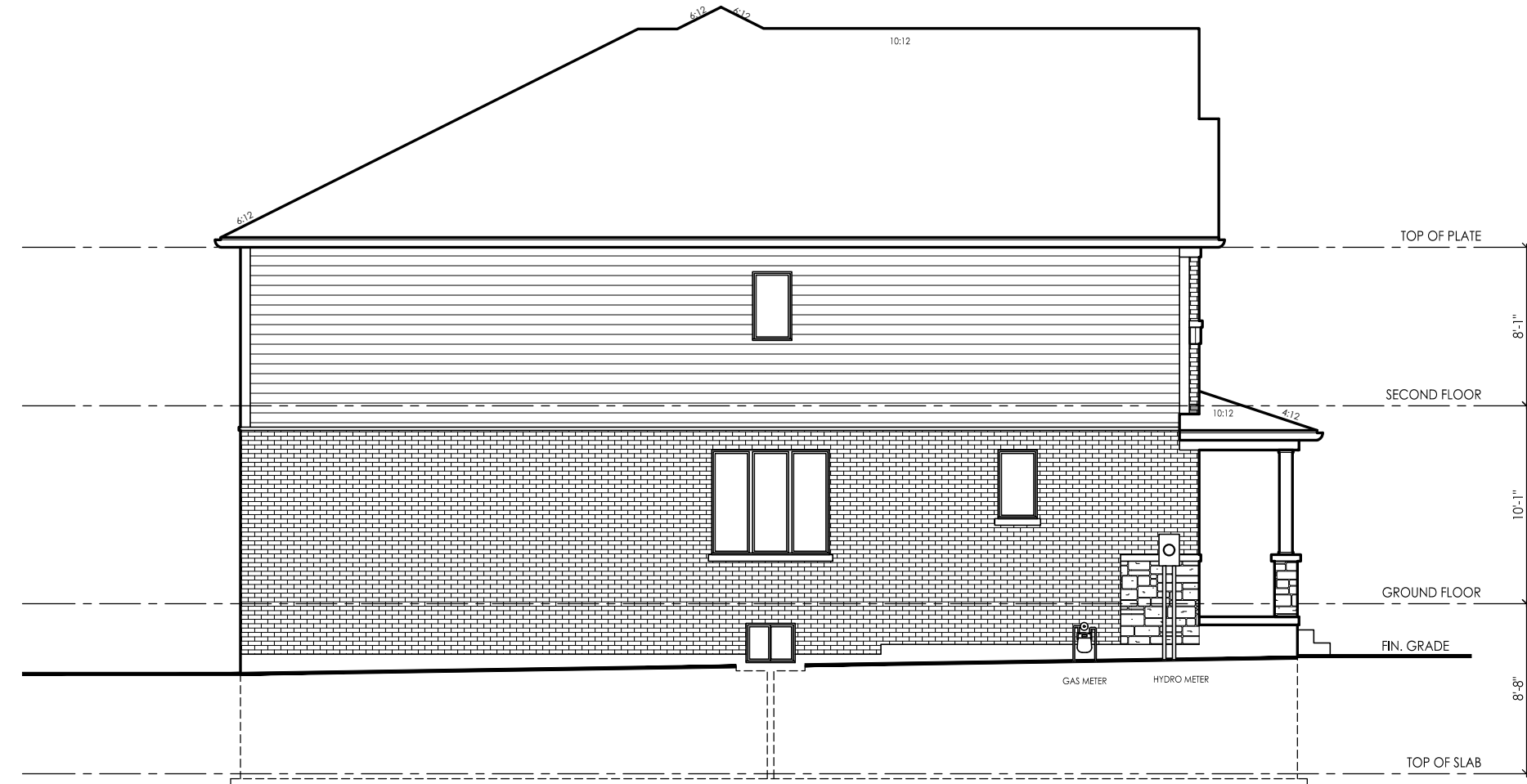
client: Tice River Homes
project: Legacy
Ayr
model: BLOCK 4
project #: 17052
scale: 1/8" = 1'-0"
page:

I, DANIEL MANNINEN, DECLARE THAT I HAVE REVIEWED AND TAKEN DESIGN RESPONSIBILITY FOR THE DESIGN WORK ON BEHALF OF RN DESIGN DESIGNER DIVISION, CLASS 3, SUBSECTION 3.2.4 OF THE BUILDING CODE. I AM QUALIFIED AND THE FIRM IS REGISTERED IN THE APPROPRIATE CLASS / CATEGORIES.
 QUALIFIED DESIGNER BCIN: 20888
 FIRM BCIN: 26995
 DATE: JANUARY-13-23

SIGNATURE: 



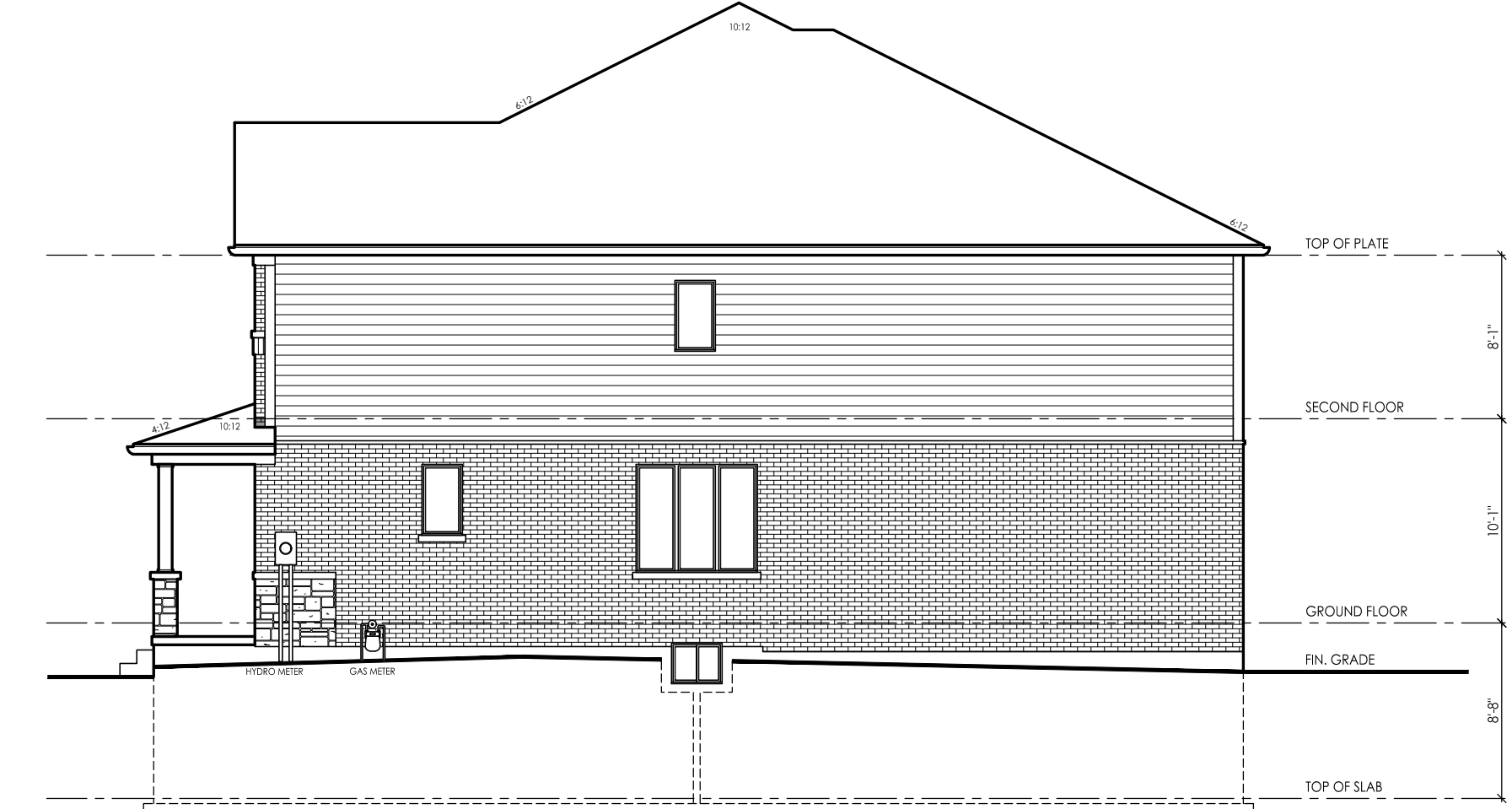
FRONT ELEVATION - BLOCK 4



TH-3 ELEV 'A1' - INTERIOR END (REV)

LEFT SIDE ELEVATION - BLOCK 4

AUTOMATIC LEVEL OFFSETS (TOP OF GRADE)			
Horizontal Offset	Vertical Offset	Horizontal Offset	Vertical Offset
0.00	0.00	0.00	0.00
0.00	0.00	0.00	0.00
0.00	0.00	0.00	0.00
0.00	0.00	0.00	0.00



TH-3 ELEV 'A1' - INTERIOR END (STD)

RIGHT SIDE ELEVATION - BLOCK 4

AUTOMATIC LEVEL OFFSETS (TOP OF GRADE)			
Horizontal Offset	Vertical Offset	Horizontal Offset	Vertical Offset
0.00	0.00	0.00	0.00
0.00	0.00	0.00	0.00
0.00	0.00	0.00	0.00
0.00	0.00	0.00	0.00



REAR ELEVATION - BLOCK 4

#	revisions	date	chm	chk
1	ISSUED FOR CLIENT REVIEW	31-Jan-22	RV	AD
2	REVISED PER CLIENT COMMENTS	14-Feb-22	MD	AD
3	REV PER PER ENG COMMENTS	25-MAR-22	MD	AD
4	ISSUED FOR PERMIT	13-Jan-23	KS	AD

client: Tice River Homes
 project: Legacy
 model: BLOCK 4
 project #: 17052
 scale: 1/8" = 1'-0"
 page: