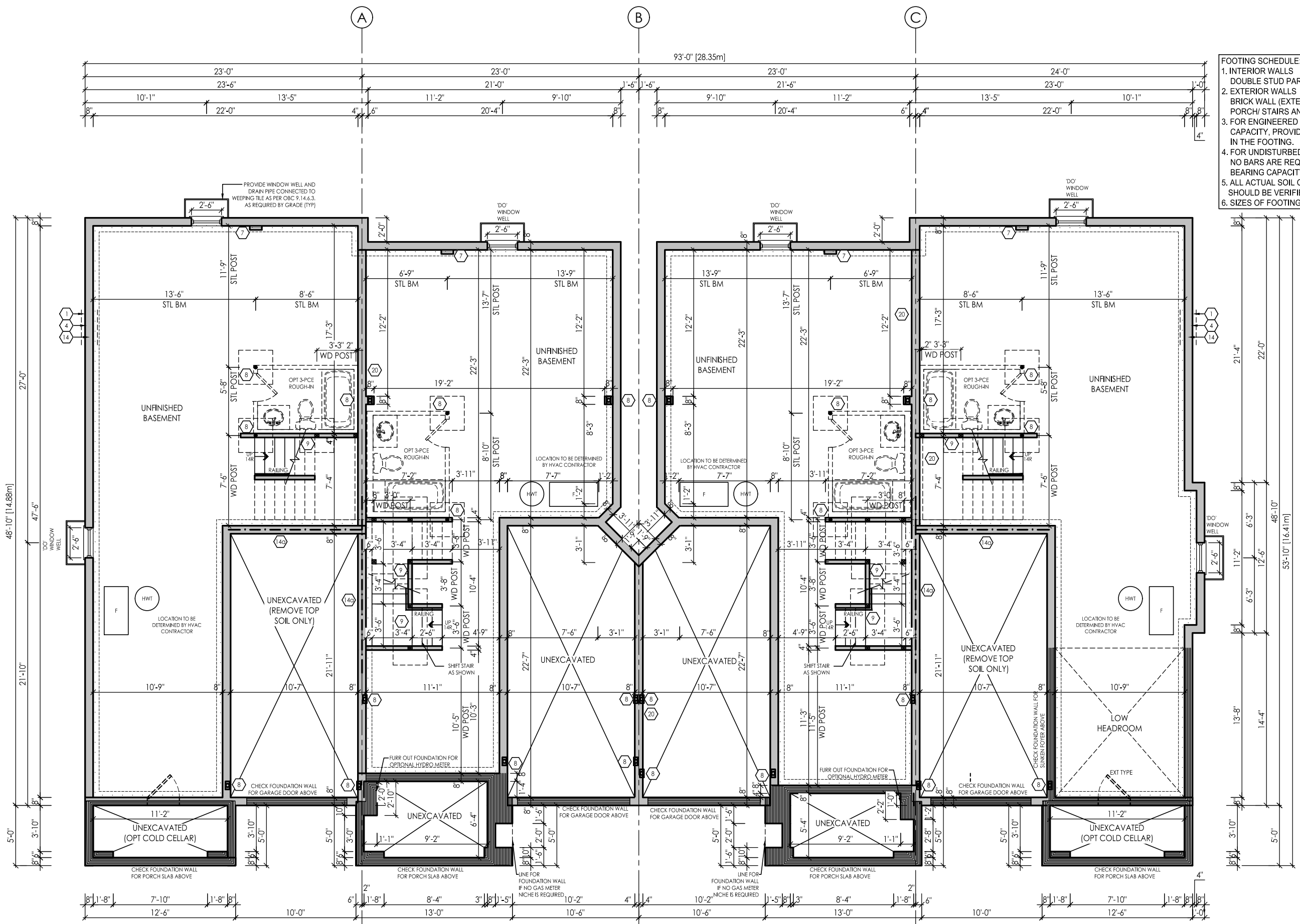


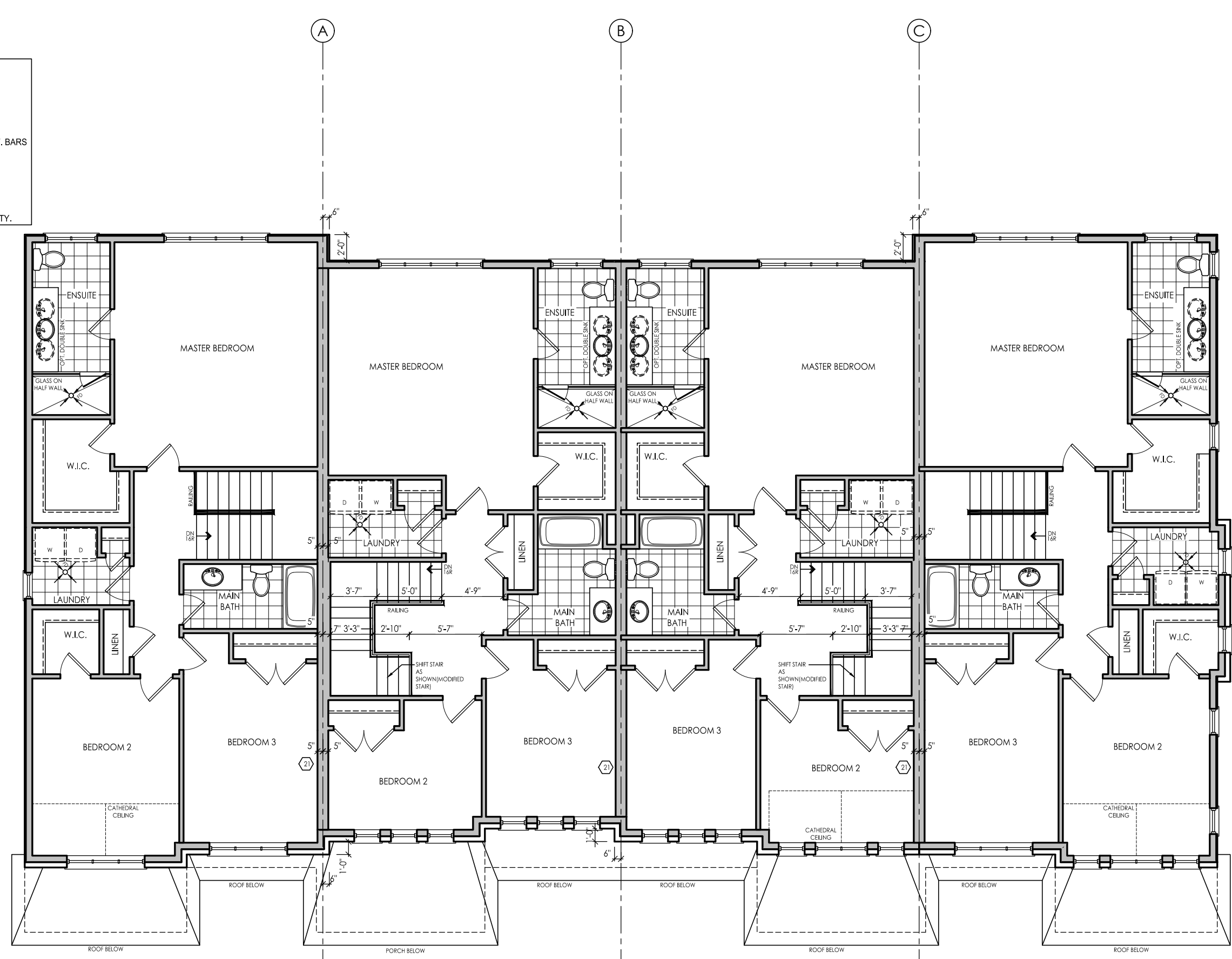


I, DANIEL HANNINEN, DECLARE THAT I HAVE REVIEWED AND TAKEN DESIGN RESPONSIBILITY FOR THE DESIGN WORK ON BEHALF OF RN DESIGN LTD UNDER DIVISION 3, SUBSECTION 3.2 OF THE BUILDING CODE. I AM QUALIFIED AND THE FIRM IS REGISTERED IN THE APPROPRIATE CLASSIFICATION CATEGORIES.  
 QUALIFIED DESIGNER BCIN: 22888  
 FIRM BCIN: 24995  
 DATE: JANUARY-13-23  
 SIGNATURE: \_\_\_\_\_

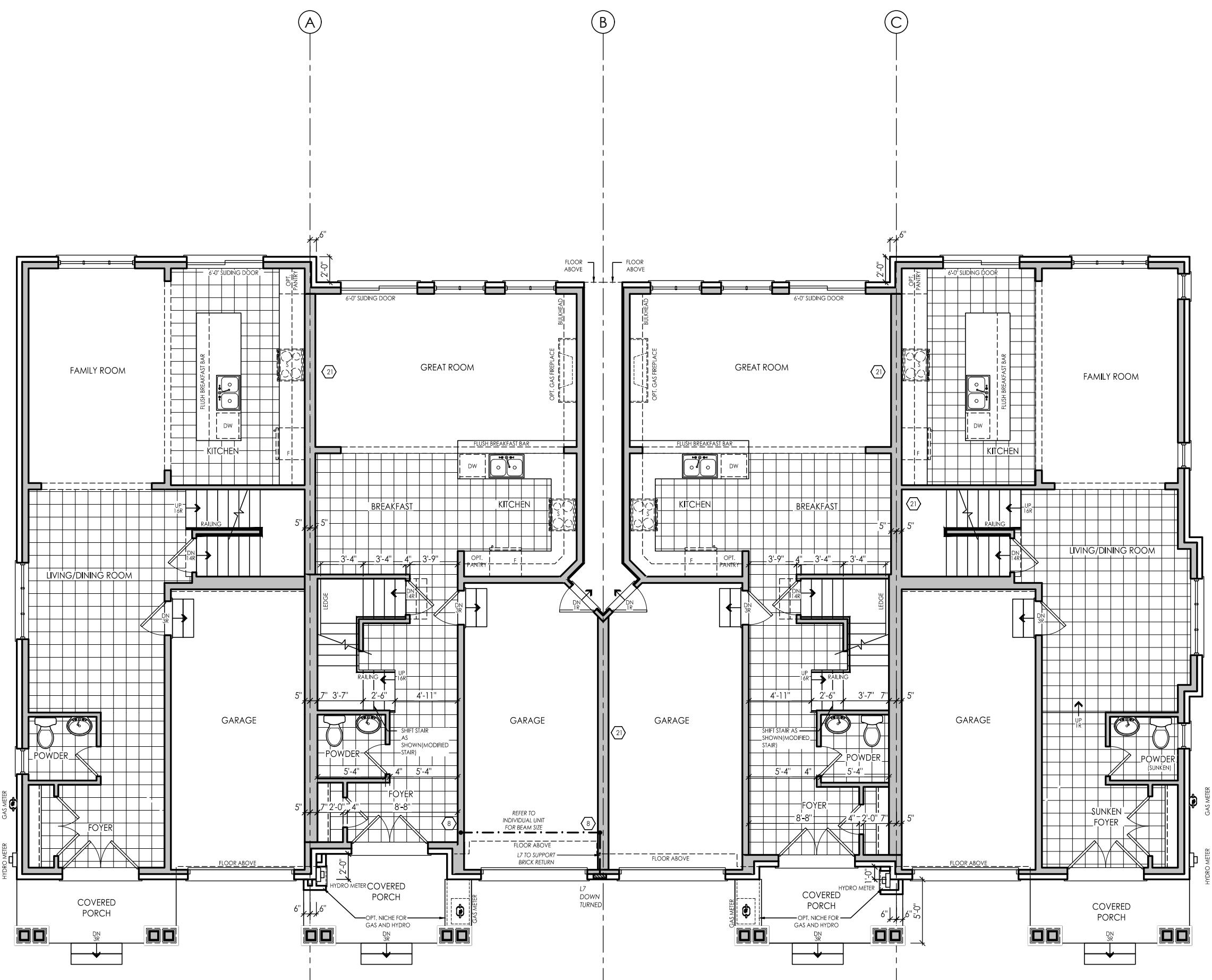


**FOOTING SCHEDULE:**  
 1. INTERIOR WALLS  
 DOUBLE STUD PARTY WALL (INTERIOR WALL) = 20" W  
 2. EXTERIOR WALLS  
 BRICK WALL (EXTERIOR WALL) = 20" W  
 PORCH STAIRS AND OTHER EXTERIOR WALLS = 20" W  
 3. FOR ENGINEERED FULL FOUNDATION OF 150 KPA SOIL BEARING CAPACITY, PROVIDE 2-15M CONT. BARS @ TOP OF FDN. WALL AND 2-15M CONT. BARS IN THE FOOTING.  
 4. FOR UNDISTURBED SOIL, FOUNDATION OF 150 KPA SOIL BEARING CAPACITY. NO BARS ARE REQUIRED. FOOTINGS ABOVE ARE BASED ON 150 KPA SOIL BEARING CAPACITY.  
 5. ALL ACTUAL SOIL CONDITION DURING FOOTING CONCRETE POURING SHOULD BE VERIFIED BY SOIL ENGINEER.  
 6. SIZES OF FOOTINGS SHOULD BE MODIFIED FOR LOWER SOIL BEARING CAPACITY.

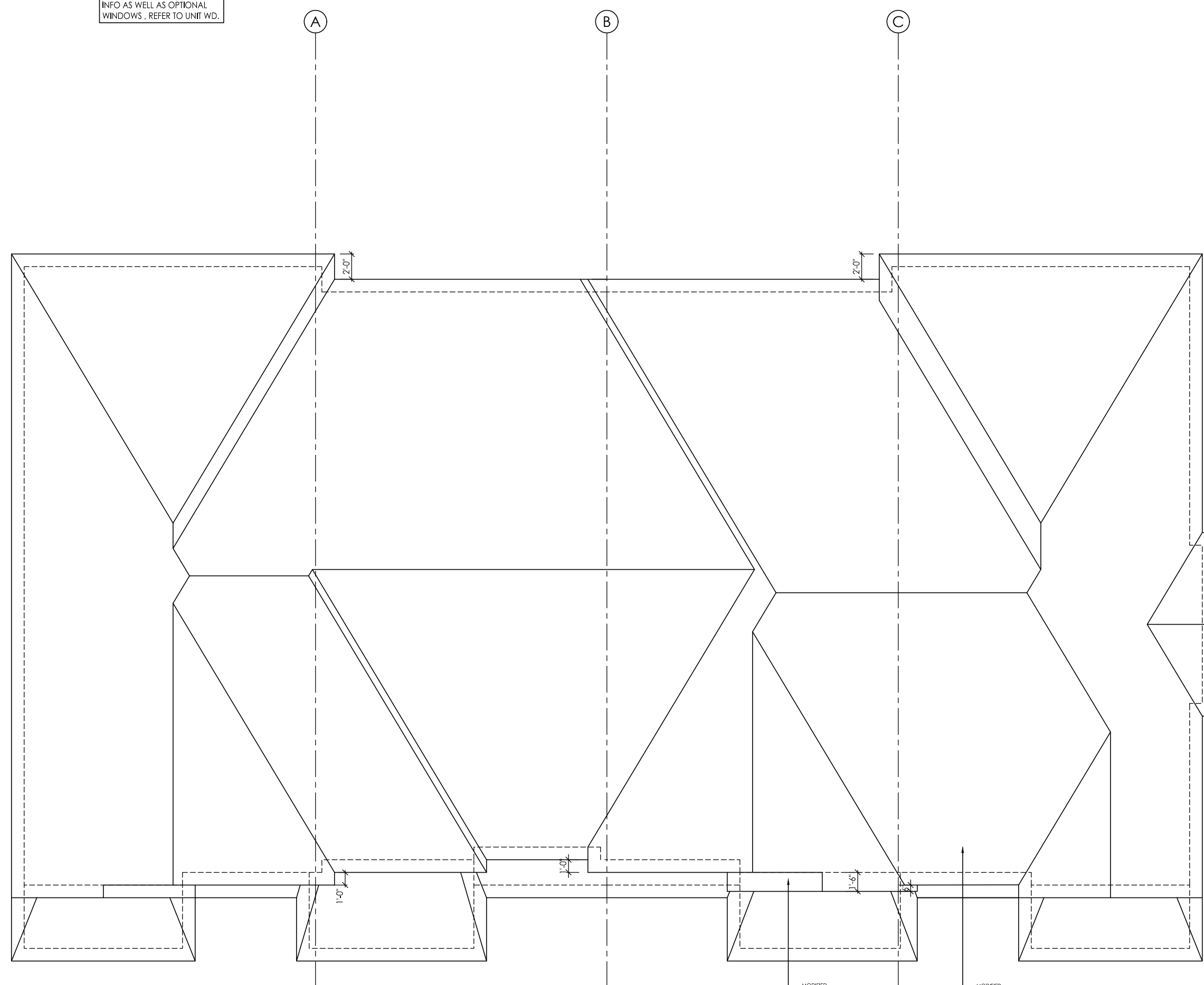
TH-3 ELEV 'A1' - INTERIOR END (REV) TH-2 ELEV 'A1' (REV) TH-2 ELEV 'A2' (STD) TH-3 ELEV 'A2' - CORNER (STD)  
**BASEMENT FLOOR - BLOCK 5**



TH-3 ELEV 'A1' - INTERIOR END (REV) TH-2 ELEV 'A1' (REV) TH-2 ELEV 'A2' (STD) TH-3 ELEV 'A2' - CORNER (STD)  
**SECOND FLOOR - BLOCK 5**



TH-3 ELEV 'A1' - INTERIOR END (REV) TH-2 ELEV 'A1' (REV) TH-2 ELEV 'A2' (STD) TH-3 ELEV 'A2' - CORNER (STD)  
**GROUND FLOOR - BLOCK 5**  
 Building Area: 4384.4 SF / 407.52 MF



TH-3 ELEV 'A1' - INTERIOR END (REV) TH-2 ELEV 'A1' (REV) TH-2 ELEV 'A2' (STD) TH-3 ELEV 'A2' - CORNER (STD)  
**ROOF PLAN - BLOCK 5**



FOR STRUCTURAL ITEMS ONLY

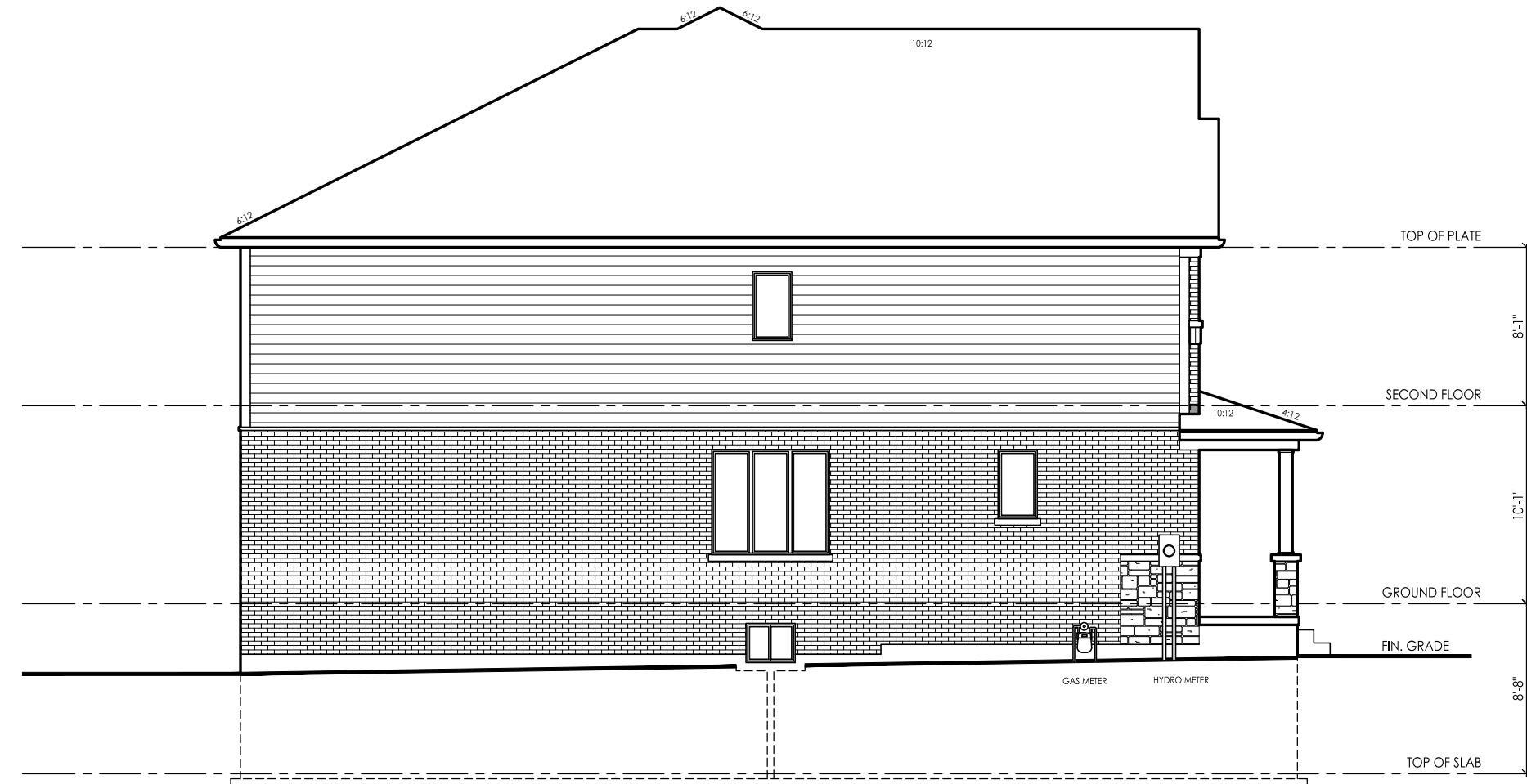
#	revisions	date	dwn	chk
1	ISSUED FOR CLIENT REVIEW	31-Jan-23	BN	AD
2	REVISED PER CLIENT COMMENTS	1-Feb-23	MD	AD
3	REV PER ENG COMMENTS	23-Feb-23	MD	AD
4	REVISED PER ADDITIONAL ENG COMMENTS	17-Jan-23	MD	AD
5	ISSUED FOR PERMIT	15-Jan-23	KS	AD

client: Tice River Homes  
 project: Legacy  
 model: BLOCK 5  
 project #: 17052  
 scale: 1/8" = 1'-0"  
 page:

I, DANIEL HANNINEN, DECLARE THAT I HAVE REVIEWED AND TAKEN DESIGN RESPONSIBILITY FOR THE DESIGN WORK ON BEHALF OF RN DESIGN (REGISTERED PROFESSIONAL ENGINEER / ARCHITECT) AND THE FIRM IS REGISTERED IN THE APPROPRIATE CLASSIFICATION CATEGORIES:  
 QUANTITY DESIGNER BCIN: 20888  
 FIRM BCIN: 24995  
 DATE: JANUARY-13-23  
 SIGNATURE:



FRONT ELEVATION - BLOCK 5



TH-3 ELEV 'A1' - INTERIOR END (REV)

LEFT SIDE ELEVATION - BLOCK 5

ALLOWABLE DIMENSIONS			
Item	Min	Max	Code
Roof Pitch	12:12	12:12	12.1
Window Height	48"	72"	12.1
Window Spacing	24"	36"	12.1
Window Width	36"	48"	12.1



TH-3 ELEV 'A2' - CORNER (STD)

RIGHT SIDE ELEVATION - BLOCK 5

ALLOWABLE DIMENSIONS			
Item	Min	Max	Code
Roof Pitch	12:12	12:12	12.1
Window Height	48"	72"	12.1
Window Spacing	24"	36"	12.1
Window Width	36"	48"	12.1



REAR ELEVATION - BLOCK 5

#	revisions	date	chm	chk
1	ISSUED FOR CLIENT REVIEW	31-Jan-22	RV	AD
2	REVISED PER CLIENT COMMENTS	14-Feb-22	MD	AD
3	REV PER ENG COMMENTS	25-MAR-22	MD	AD
5	ISSUED FOR PERMIT	13-Jan-23	KS	AD

client: Tice River Homes  
 project: Legacy  
 model: BLOCK 5  
 project #: 17052  
 scale: 1/8" = 1'-0"