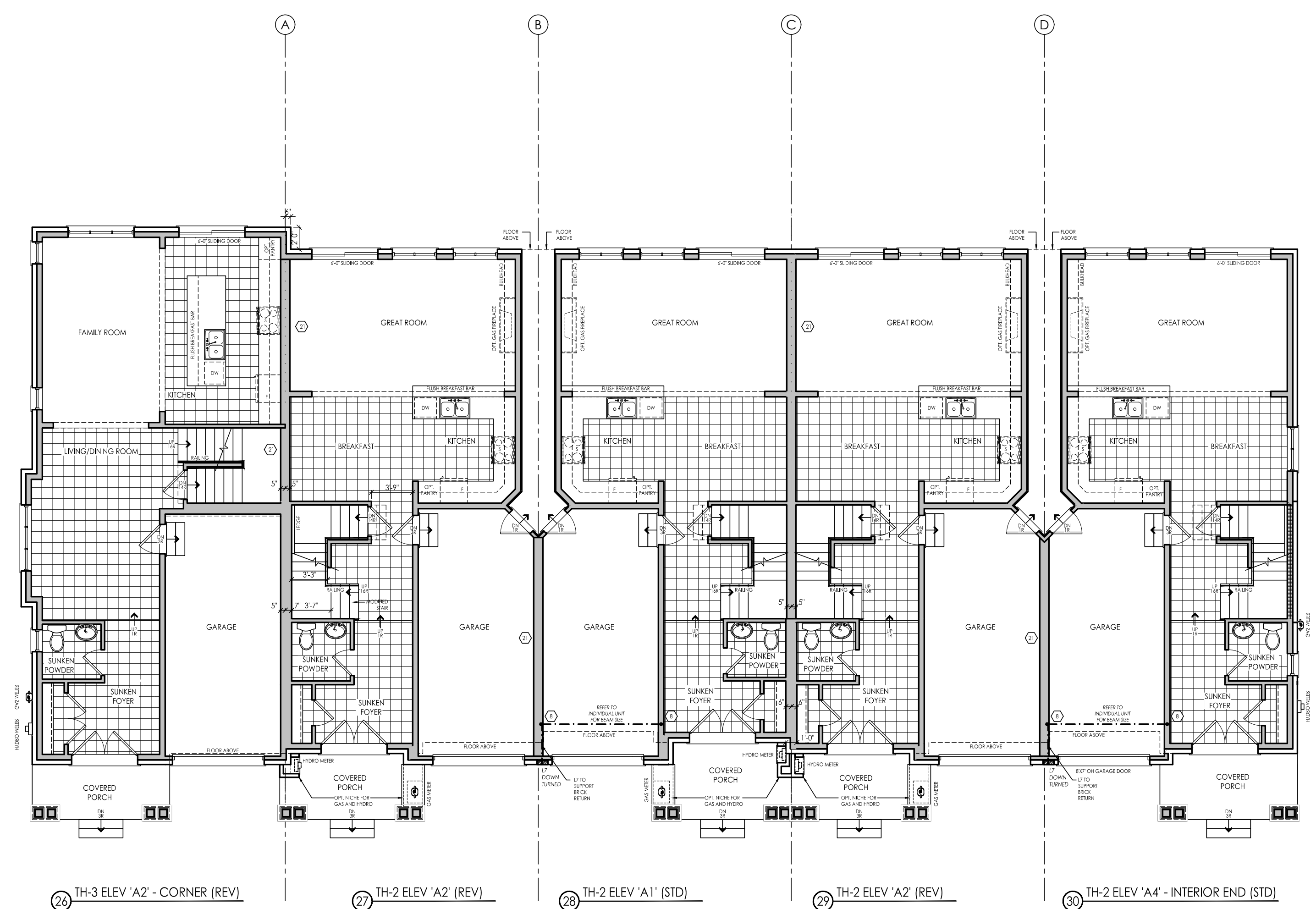


TH-3 ELEV 'A2' - CORNER (REV) TH-2 ELEV 'A2' (REV) TH-2 ELEV 'A1' (STD) TH-2 ELEV 'A2' (REV) TH-2 ELEV 'A4' - INTERIOR END (STD)
BASEMENT FLOOR - BLOCK 6



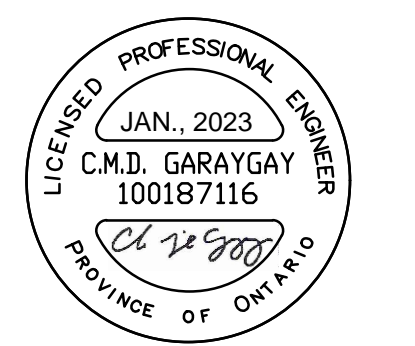
TH-3 ELEV 'A2' - CORNER (REV) TH-2 ELEV 'A2' (REV) TH-2 ELEV 'A1' (STD) TH-2 ELEV 'A2' (REV) TH-2 ELEV 'A4' - INTERIOR END (STD)
GROUND FLOOR - BLOCK 6

Building Area: 5972.04 SF / 550.94 m²
 FOR ANY CORRECTIONS OR
 INFO AS WELL AS OPTIONS,
 WINDOWS, REFER TO UNIT WD.



WWW.RNDESIGN.COM
 Tel: 905-738-3177
 WWW.THEPLUSGROUP.CA

I, DANIEL HANNINEN, DECLARE THAT I HAVE REVIEWED AND
 TAKEN DESIGN RESPONSIBILITY FOR THE DESIGN WORK ON
 BEHALF OF RN DESIGN INC UNDER DIVISION 3, PART 3
 SUBSECTION 3.2 OF THE BUILDING CODE. I AM QUALIFIED
 AND THE FIRM IS REGISTERED IN THE APPROPRIATE CLASS /
 CATEGORIES:
 QUALIFIED DESIGNER BORN: 2088
 FIRM BORN: 2095
 DATE: JANUARY-13-23
 SIGNATURE: _____



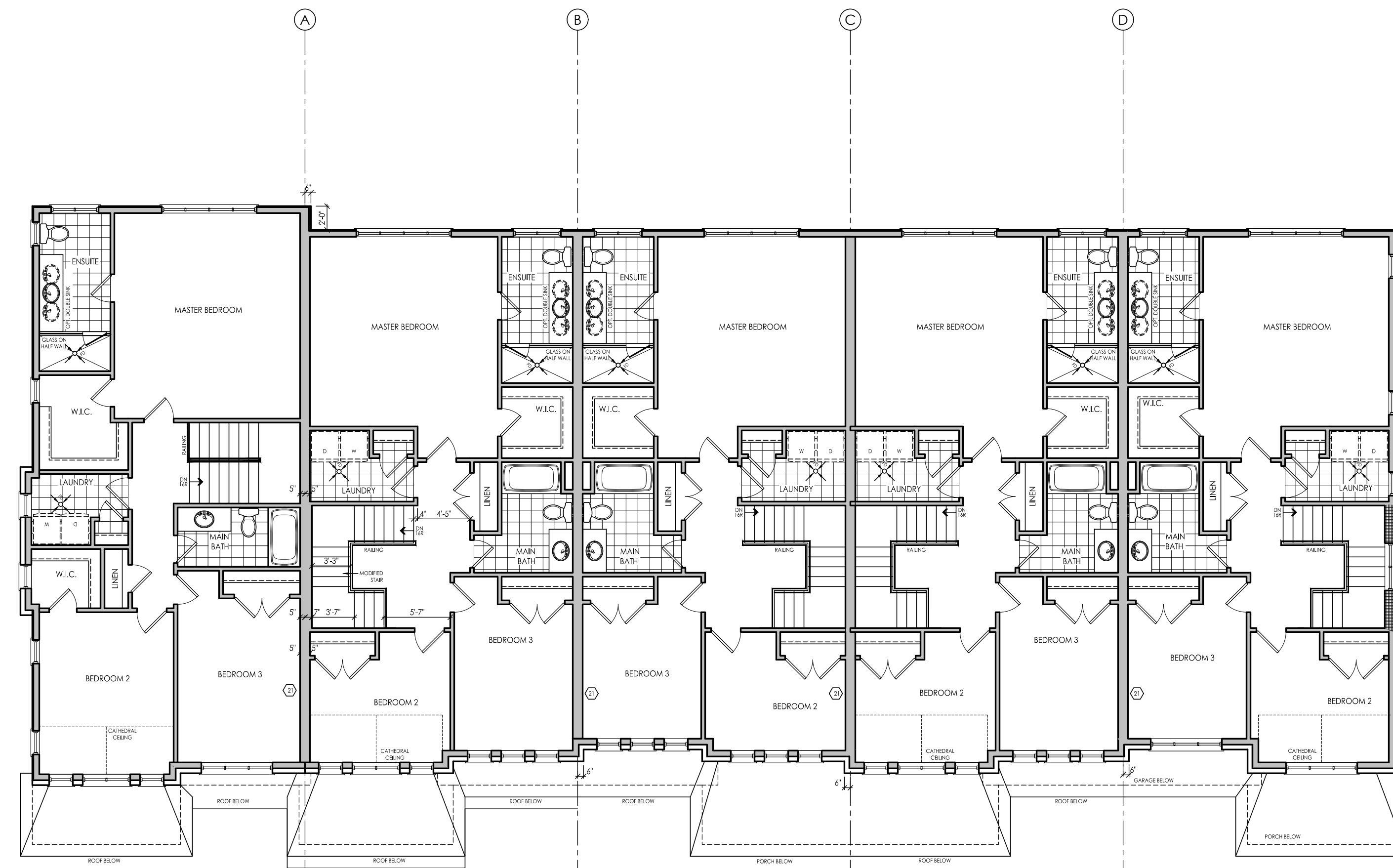
FOR STRUCTURAL ITEMS ONLY

#	revisions	date	chm	chk
1	ISSUED FOR CLIENT REVIEW	30/07/22	BU	DM
2	REVISED PER CLIENT COMMENTS	14/08/22	MD	AD
3	REV PER ENG COMMENTS	20/08/22	MD	AD
4	ISSUED FOR PERMIT	13/09/23	KS	AD

client: Tice River Homes
 project: Legacy
 model: BLOCK 6
 project #: 17052
 scale: 1/8" = 1'-0"
 page:

I, DANIEL HANNINEN DECLARE THAT I HAVE REVIEWED AND TAKEN DESIGN RESPONSIBILITY FOR THE DESIGN WORK ON BEHALF OF RN DESIGN DESIGNER DIVISION CLASS 3 SUBSECTION 3.2.4 OF THE BUILDING CODE. I AM QUALIFIED AND THE FIRM IS REGISTERED IN THE APPROPRIATE CLASS / CATEGORIES.
 QUALIFIED DESIGNER BCIN: 22888
 FIRM BCIN: 24995
 DATE: JANUARY-13-23

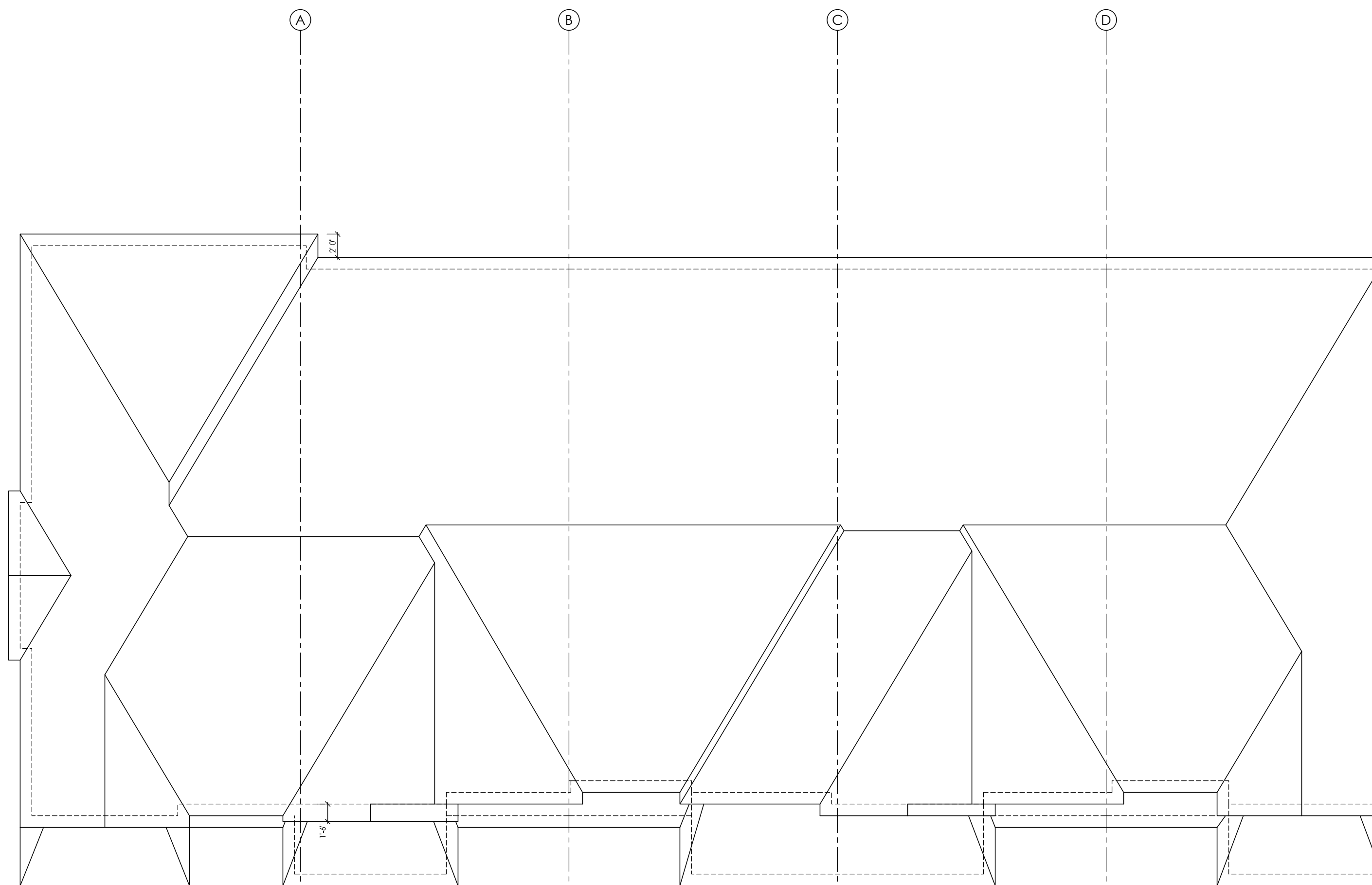
SIGNATURE: _____



26 TH-3 ELEV 'A2' - CORNER (REV) 27 TH-2 ELEV 'A2' (REV) 28 TH-2 ELEV 'A1' (STD) 29 TH-2 ELEV 'A2' (REV) 30 TH-2 ELEV 'A4' - INTERIOR END (STD)

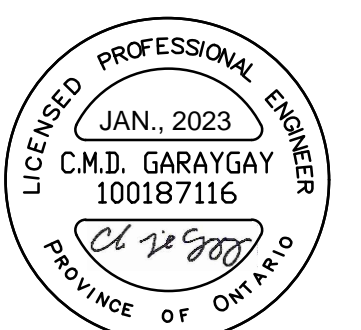
SECOND FLOOR - BLOCK 6

FOR ANY OPTIONAL PLANS OR INFO AS WELL AS OPTIONAL WINDOWS, REFER TO LINE #10.



26 TH-3 ELEV 'A2' - CORNER (REV) 27 TH-2 ELEV 'A2' (REV) 28 TH-2 ELEV 'A1' (STD) 29 TH-2 ELEV 'A2' (REV) 30 TH-2 ELEV 'A4' - INTERIOR END (STD)

ROOF PLAN - BLOCK 6



FOR STRUCTURAL ITEMS ONLY

#	revisions	date	chm	chk
1	ISSUED FOR CLIENT REVIEW	30/07/22	RV	DM
2	REVISED PER CLIENT COMMENTS	14/08/22	MD	AD
3	REV PER ENG COMMENTS	22/08/22	MD	AD
4	ISSUED FOR PERMIT	13/09/22	KS	AD

client: Tice River Homes
 project: Legacy
 Ayr
 model: BLOCK 6
 project #: 17052
 scale: 1/8" = 1'-0"
 page:



FRONT ELEVATION - BLOCK 6



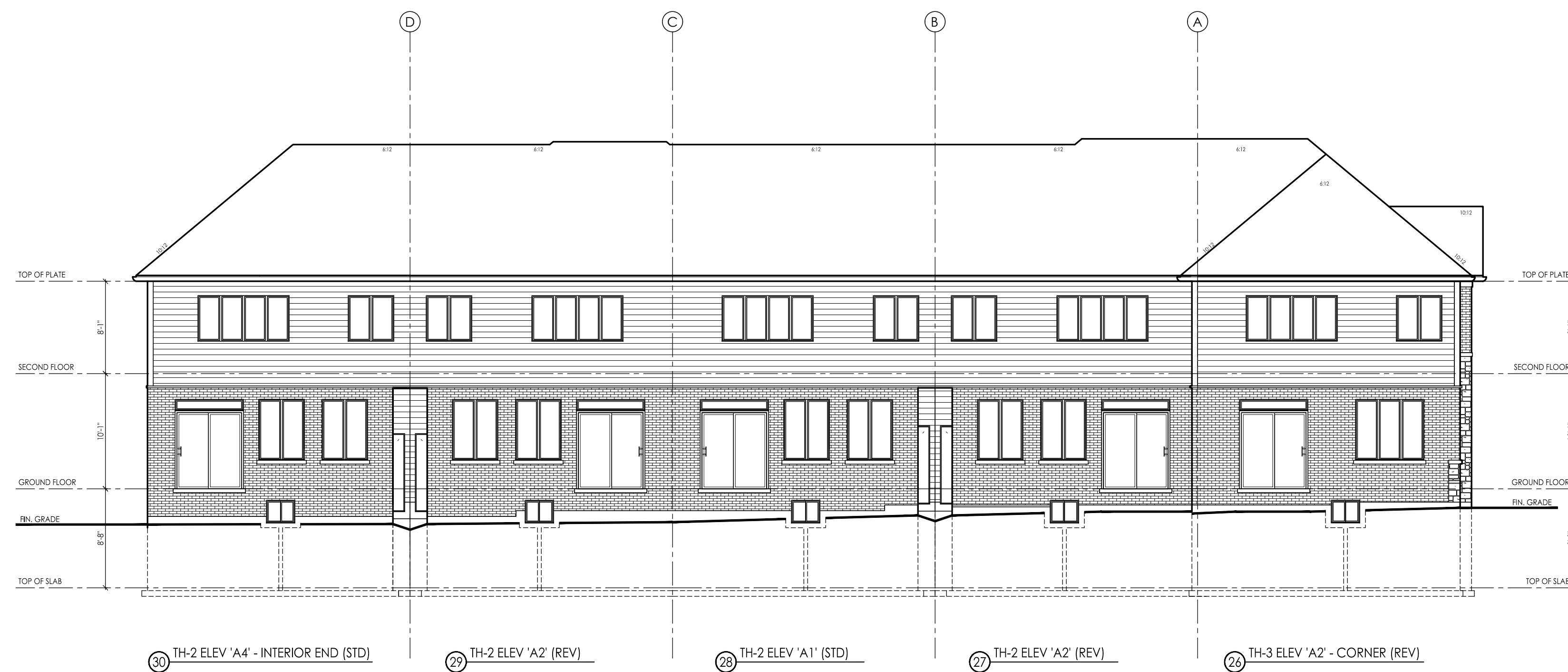
26 TH-3 ELEV 'A2' - CORNER (REV)

LEFT SIDE ELEVATION - BLOCK 6



30 TH-2 ELEV 'A4' - INTERIOR END (STD)

RIGHT SIDE ELEVATION - BLOCK 6



REAR ELEVATION - BLOCK 6

ALTERNATE WINDOW SCHEDULE			
Window	U-Value	R-Value	Area
Window 1	0.25	4.00	10.00
Window 2	0.25	4.00	10.00
Window 3	0.25	4.00	10.00
Window 4	0.25	4.00	10.00
Window 5	0.25	4.00	10.00

#	revisions	date	chm	chk
1	ISSUED FOR CLIENT REVIEW	30/07/22	BN	DM
2	REVISED PER CLIENT COMMENTS	14/08/22	MD	AD
3	REV PER ENG COMMENTS	25/08/22	MD	AD
4	ISSUED FOR PERMIT	13/09/22	KS	AD

client	Tice River Homes
project	Legacy Ayr
model	BLOCK 6
project #	17052
scale	1/8" = 1'-0"
page	